

**Bw**

**Nista**

—type

specimen

## Description

---

Bw Nista is a clean modernist sans serif font family. Designed to provide a neutral tone of voice, it comes in three different sets each with subtle features portraying different personalities.

**Bw Nista Grotesk's** clean shapes are peppered with subdued quirky details, marrying the warmer feel of the early grotesques from the 19th Century with a contemporary approach. **Bw Nista International** taps into the utterly functional grid-based Swiss style thanks to its strict and rational shapes, removing all quiriness from its Grotesk sibling, while **Bw Nista Geometric** offers a minimalistic interpretation of the genre, achieving an even simpler and cleaner feel.

Designed by Alberto Romanos, all three variations of Bw Nista are available in 7 weights from the elegant Thin to the authoritative Black with *matching oblique italics*, providing a very functional palette for the task at hand. It supports all European Latin languages and it includes OpenType features like ligatures, old style and tabular figures or case sensitive forms among others.

**Bw Nista  
Grotesk**

**a**

**Bw Nista  
International**

**a**

**Bw Nista  
Geometric**

**a**

## Bw Nista Grotesk

Thin *Italic*

Light *Italic*

Regular *Italic*

Medium *Italic*

**Bold *Italic***

**ExtraBold *Italic***

**Black *Italic***

## Bw Nista International

Thin *Italic*

Light *Italic*

Regular *Italic*

Medium *Italic*

**Bold *Italic***

**ExtraBold *Italic***

**Black *Italic***

## Bw Nista Geometric

Thin *Italic*

Light *Italic*

Regular *Italic*

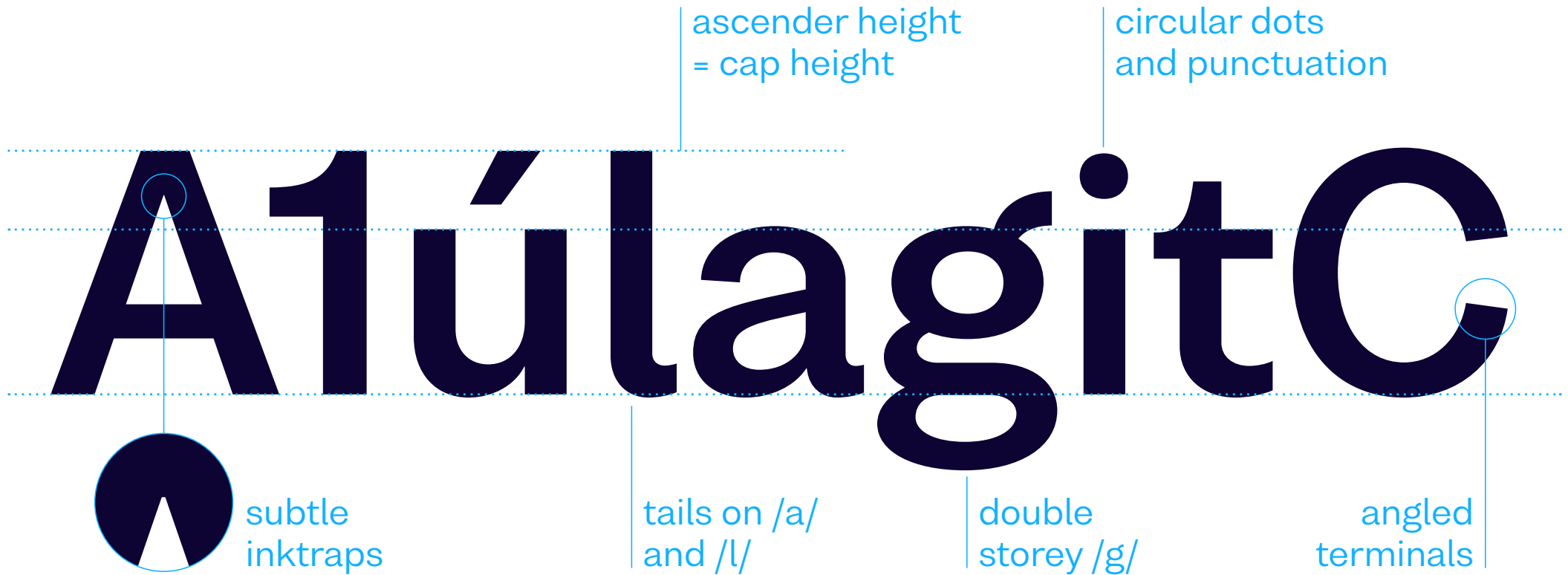
Medium *Italic*

**Bold *Italic***

**ExtraBold *Italic***

**Black *Italic***

# Bw Nista Grotesk



# Bw Nista Grotesk

## Extended Latin uppercase

A Á Ā Ă Ä À Ā Ą Ą Ą Æ B C C ̇ Ç Ç  
D Đ Ď ě E É Ě Ê Ë È Ē Ę F G Ğ Ġ  
Ġ H Ħ I Í Î Ï Ì Ī J J K Ķ L L Ľ Ł  
M N Ń Ņ ņ Ñ O Ó Ô Õ Ò Ŏ Ø Õ  
Œ P Þ Q R R ́ R ̈́ S S ́ S ̈́ ß T ƒ  
Ť Ŧ U Ú Û Ü Ù Ů Ū Ŭ V W W ́ W  
Ẁ ẁ X Y Y ́ Y ̈́ Z Z ́ Z ̈́

## Extended Latin lowercase

a á ă â ä à ā ą ą ą Æ b c c ̇ ç ç d  
đ d' đ e é ě ê ë è ē ę f g ğ ġ ģ h  
ħ i í î ï ì ĩ j j k ķ l l Ľ ł m n n ń  
ņ ŋ ñ o ó ô õ ò ő õ ø õ œ p þ q r r  
ř ř s s ́ s ̈́ ß t t ́ t ̈́ u ú û ü ù ů ū  
ұ ұ v w w ́ w ̈́ x y y ́ y ̈́ z z ́ z ̈́

## Ligatures

fb ff ffb ffh ffi ffj ffk ffl fft fh fi fj fk ft  
fi fl tt

## Proportional lining figures

1234567890

## Tabular lining figures

1234567890

## Proportional old style figures

1234567890 # ¢ \$ € £ ¥ % ‰

## Fractions

1/2 1/3 2/3 3/4 1/5 2/5 1/6 1/7 3/8 1/10 12345/67890

## Symbols and punctuation

\* \ . : , ... ! ; # . ? ¿ ° ' " ; / \_ { } [ ] ( )  
- - - « » ‹ › „ “ ” ‘ ’ , € ¢ ¤ \$ f £ ¥ ≈ ~ ÷ ∅ = > ≥ ∞ ∫ < ≤ ¬ - × ≠ ∂ % ‰  
+ ± Δ Ω μ π Π √ Σ ∎ | ¡ @ & ¶ © ® § ™ ^ † ‡ § ¨ ∞ ~

## Case sensitive forms

\ i ¿ / # { } [ ] ( ) - - - « » ‹ › + - × ÷ = ≠ > < ≥ ≤ ± ¬

## Grotesk. Uprights sample paragraph 8/12pt

---

### Thin

Bw Nista Grotesk's clean shapes are peppered with subdued quirky details, marrying the more human feel of the early grotesques from the 19th Century with a contemporary approach. Bw Nista International taps into the utterly functional grid-based Swiss style thanks to its strict and rational shapes, removing all quiriness from its Grotesk sibling, while Bw Nista Geometric offers a minimalistic interpretation of the genre, achieving an even simpler and cleaner feel.

### Light

Bw Nista Grotesk's clean shapes are peppered with subdued quirky details, marrying the more human feel of the early grotesques from the 19th Century with a contemporary approach. Bw Nista International taps into the utterly functional grid-based Swiss style thanks to its strict and rational shapes, removing all quiriness from its Grotesk sibling, while Bw Nista Geometric offers a minimalistic interpretation of the genre, achieving an even simpler and cleaner feel.

### Regular

Bw Nista Grotesk's clean shapes are peppered with subdued quirky details, marrying the more human feel of the early grotesques from the 19th Century with a contemporary approach. Bw Nista International taps into the utterly functional grid-based Swiss style thanks to its strict and rational shapes, removing all quiriness from its Grotesk sibling, while Bw Nista Geometric offers a minimalistic interpretation of the genre, achieving an even simpler and cleaner feel.

### Medium

Bw Nista Grotesk's clean shapes are peppered with subdued quirky details, marrying the more human feel of the early grotesques from the 19th Century with a contemporary approach. Bw Nista International taps into the utterly functional grid-based Swiss style thanks to its strict and rational shapes, removing all quiriness from its Grotesk sibling, while Bw Nista Geometric offers a minimalistic interpretation of the genre, achieving an even simpler and cleaner feel.

### Bold

**Bw Nista Grotesk's clean shapes are peppered with subdued quirky details, marrying the more human feel of the early grotesques from the 19th Century with a contemporary approach. Bw Nista International taps into the utterly functional grid-based Swiss style thanks to its strict and rational shapes, removing all quiriness from its Grotesk sibling, while Bw Nista Geometric offers a minimalistic interpretation of the genre, achieving an even simpler and cleaner feel.**

### ExtraBold

**Bw Nista Grotesk's clean shapes are peppered with subdued quirky details, marrying the more human feel of the early grotesques from the 19th Century with a contemporary approach. Bw Nista International taps into the utterly functional grid-based Swiss style thanks to its strict and rational shapes, removing all quiriness from its Grotesk sibling, while Bw Nista Geometric offers a minimalistic interpretation of the genre, achieving an even simpler and cleaner feel.**

### Black

**Bw Nista Grotesk's clean shapes are peppered with subdued quirky details, marrying the more human feel of the early grotesques from the 19th Century with a contemporary approach. Bw Nista International taps into the utterly functional grid-based Swiss style thanks to its strict and rational shapes, removing all quiriness from its Grotesk sibling, while Bw Nista Geometric offers a minimalistic interpretation of the genre, achieving an even simpler and cleaner feel.**

## Grotesk. Italics sample paragraph 8/12pt

---

### Thin

*Bw Nista Grotesk's clean shapes are peppered with subdued quirky details, marrying the more human feel of the early grotesques from the 19th Century with a contemporary approach. Bw Nista International taps into the utterly functional grid-based Swiss style thanks to its strict and rational shapes, removing all quiriness from its Grotesk sibling, while Bw Nista Geometric offers a minimalistic interpretation of the genre, achieving an even simpler and cleaner feel.*

### Light

*Bw Nista Grotesk's clean shapes are peppered with subdued quirky details, marrying the more human feel of the early grotesques from the 19th Century with a contemporary approach. Bw Nista International taps into the utterly functional grid-based Swiss style thanks to its strict and rational shapes, removing all quiriness from its Grotesk sibling, while Bw Nista Geometric offers a minimalistic interpretation of the genre, achieving an even simpler and cleaner feel.*

### Regular

*Bw Nista Grotesk's clean shapes are peppered with subdued quirky details, marrying the more human feel of the early grotesques from the 19th Century with a contemporary approach. Bw Nista International taps into the utterly functional grid-based Swiss style thanks to its strict and rational shapes, removing all quiriness from its Grotesk sibling, while Bw Nista Geometric offers a minimalistic interpretation of the genre, achieving an even simpler and cleaner feel.*

### Medium

*Bw Nista Grotesk's clean shapes are peppered with subdued quirky details, marrying the more human feel of the early grotesques from the 19th Century with a contemporary approach. Bw Nista International taps into the utterly functional grid-based Swiss style thanks to its strict and rational shapes, removing all quiriness from its Grotesk sibling, while Bw Nista Geometric offers a minimalistic interpretation of the genre, achieving an even simpler and cleaner feel.*

### Bold

***Bw Nista Grotesk's clean shapes are peppered with subdued quirky details, marrying the more human feel of the early grotesques from the 19th Century with a contemporary approach. Bw Nista International taps into the utterly functional grid-based Swiss style thanks to its strict and rational shapes, removing all quiriness from its Grotesk sibling, while Bw Nista Geometric offers a minimalistic interpretation of the genre, achieving an even simpler and cleaner feel.***

### ExtraBold

***Bw Nista Grotesk's clean shapes are peppered with subdued quirky details, marrying the more human feel of the early grotesques from the 19th Century with a contemporary approach. Bw Nista International taps into the utterly functional grid-based Swiss style thanks to its strict and rational shapes, removing all quiriness from its Grotesk sibling, while Bw Nista Geometric offers a minimalistic interpretation of the genre, achieving an even simpler and cleaner feel.***

### Black

***Bw Nista Grotesk's clean shapes are peppered with subdued quirky details, marrying the more human feel of the early grotesques from the 19th Century with a contemporary approach. Bw Nista International taps into the utterly functional grid-based Swiss style thanks to its strict and rational shapes, removing all quiriness from its Grotesk sibling, while Bw Nista Geometric offers a minimalistic interpretation of the genre, achieving an even simpler and cleaner feel.***



**Grotesk. Uprights sample headline 24/28pt**

---

Thin

A WIZARD'S JOB IS TO VEX  
CHUMPS QUICKLY IN FOG

Light

“FIX, SCHWYZ!” QUÄKT  
JÜRGEN BLÖD VOM PAß

Regular

WHISKY BUENO: ¡EXCITAD  
MI FRÁGIL PEQUEÑA VEJEZ!

Medium

PÓJDŹ W LOCH ZBIĆ  
MAŁŻEŃSKĄ GĘŚ FUTRYN!

Bold

VOYEZ LE BRICK GÉANT QUE  
J'EXAMINE PRÈS DU WHARF

ExtraBold

MUZICOLOGĂ ÎN BEJ VÂND  
WHISKY ŞI TEQUILA, PREŢ FIX

Black

SEE VÄIKE MÖLDER  
JÕUAB RONGILE HÜPATA

**Grotesk. Italics sample headline 24/28pt**

---

*Thin*

ÖKÜZ AJAN HAPSE DÜŞTÜ  
YAVRUM, OCAĞI FELÇ GIBI

*Light*

PIŠKUR MOLČE GRABI FIŽOL  
Z DNA CEZIJEVERE HOSTE

*Regular*

ÞÚ DAZT Á HNÉÐ Í VÖK OG  
YFIR BLÓM SEXÝ PÆJU

*Medium*

SIC FUGIENS, DUX, ZELOTYPOS,  
QUAM KARUS HABERIS

*Bold*

KŔDEL' ĎATĽOV UČÍ KOŇA  
ŽRAŤ KÔRU

*ExtraBold*

QUALCHE NOTIZIA PAVESE  
MI FA SBADIGLIARE

*Black*

BYXFJÄRMAT FÖL GICK  
PÅ DUVSHOWEN

# Bw Nista International





# Bw Nista International

## Extended Latin uppercase

A Á Ā Ă Ä Å Æ B C Č Ć Ĉ  
D Đ Ď Ę E É Ě Ê Ë È Ē Ę F G Ğ Ġ  
Ģ H Ħ I Í Î Ï Ĳ Ĵ J K Ķ L Ł Ľ Ļ  
M N Ń Ņ ņ Ñ O Ó Ô Õ Ò Ò Õ Ø Õ  
Œ P Þ Q R Ŕ Ŗ Ŗ S Ś Š Ŝ Š ß T Ʀ  
Ŧ Ŧ Ŧ U Ú Û Ü Û Ũ Ũ Ũ V W Ű Ű  
Ŵ Ŵ X Y Ý Ŷ ŷ Ÿ Ź Ź Ź Ź

## Extended Latin lowercase

a á ă â ä å æ b c č ć ĉ d  
đ d' đ e é ě ê ë è ē ę f g ğ ġ ģ h  
ħ i í î ï ĳ ĵ ĵ ĵ ĵ ĵ ĵ ĵ ĵ ĵ  
ŋ ŋ ñ o ó ô õ ò ó õ ø õ œ p þ q r r  
ř ŕ s ś š ŝ ŝ ß t ƥ ƥ ƥ ƥ u ú û ü ù ú ũ  
ų ũ v w w w w x y ý ŷ ŷ ŷ z ź ź ź

## Ligatures

fb ff ffb ffh ffi ffj ffk ffl fft fh fi fj fk ft  
fi fl tt

## Proportional lining figures

1234567890

## Tabular lining figures

1234567890

## Proportional old style figures

1234567890 # ¢ \$ € £ ¥ % ‰

## Fractions

1/2 1/3 2/3 3/4 1/5 2/5 1/6 1/7 3/8 1/10 12345/67890

## Symbols and punctuation

\* \ . : , ... ! ; # . ? ¿ ° ' " ; / \_ { } [ ] ( )  
- - - « » ‹ › „ “ ” ‘ ’ , € ¢ ¤ \$ £ ¥  
≈ ~ ÷ ∅ = > ≥ ∞ ∫ < ≤ ¬ - × ≠ ∂ % ‰  
+ ± Δ Ω μ π Π √ Σ ∠ ∥ @ & ¶ © ® §  
™ ^ + † ‡ √ √ √ √ √ √ √ √ √ √

## Case sensitive forms

\ i ¿ / # { } [ ] ( ) - - - « » ‹ › + - × ÷  
= ≠ > < ≥ ≤ ± ¬

## International. Uprights sample paragraph 8/12pt

---

### Thin

Bw Nista Grotesk's clean shapes are peppered with subdued quirky details, marrying the more human feel of the early grotesques from the 19th Century with a contemporary approach. Bw Nista International taps into the utterly functional grid-based Swiss style thanks to its strict and rational shapes, removing all quiriness from its Grotesk sibling, while Bw Nista Geometric offers a minimalistic interpretation of the genre, achieving an even simpler and cleaner feel.

### Light

Bw Nista Grotesk's clean shapes are peppered with subdued quirky details, marrying the more human feel of the early grotesques from the 19th Century with a contemporary approach. Bw Nista International taps into the utterly functional grid-based Swiss style thanks to its strict and rational shapes, removing all quiriness from its Grotesk sibling, while Bw Nista Geometric offers a minimalistic interpretation of the genre, achieving an even simpler and cleaner feel.

### Regular

Bw Nista Grotesk's clean shapes are peppered with subdued quirky details, marrying the more human feel of the early grotesques from the 19th Century with a contemporary approach. Bw Nista International taps into the utterly functional grid-based Swiss style thanks to its strict and rational shapes, removing all quiriness from its Grotesk sibling, while Bw Nista Geometric offers a minimalistic interpretation of the genre, achieving an even simpler and cleaner feel.

### Medium

Bw Nista Grotesk's clean shapes are peppered with subdued quirky details, marrying the more human feel of the early grotesques from the 19th Century with a contemporary approach. Bw Nista International taps into the utterly functional grid-based Swiss style thanks to its strict and rational shapes, removing all quiriness from its Grotesk sibling, while Bw Nista Geometric offers a minimalistic interpretation of the genre, achieving an even simpler and cleaner feel.

### Bold

**Bw Nista Grotesk's clean shapes are peppered with subdued quirky details, marrying the more human feel of the early grotesques from the 19th Century with a contemporary approach. Bw Nista International taps into the utterly functional grid-based Swiss style thanks to its strict and rational shapes, removing all quiriness from its Grotesk sibling, while Bw Nista Geometric offers a minimalistic interpretation of the genre, achieving an even simpler and cleaner feel.**

### ExtraBold

**Bw Nista Grotesk's clean shapes are peppered with subdued quirky details, marrying the more human feel of the early grotesques from the 19th Century with a contemporary approach. Bw Nista International taps into the utterly functional grid-based Swiss style thanks to its strict and rational shapes, removing all quiriness from its Grotesk sibling, while Bw Nista Geometric offers a minimalistic interpretation of the genre, achieving an even simpler and cleaner feel.**

### Black

**Bw Nista Grotesk's clean shapes are peppered with subdued quirky details, marrying the more human feel of the early grotesques from the 19th Century with a contemporary approach. Bw Nista International taps into the utterly functional grid-based Swiss style thanks to its strict and rational shapes, removing all quiriness from its Grotesk sibling, while Bw Nista Geometric offers a minimalistic interpretation of the genre, achieving an even simpler and cleaner feel.**

## International. Italics sample paragraph 8/12pt

---

### Thin

*Bw Nista Grotesk's clean shapes are peppered with subdued quirky details, marrying the more human feel of the early grotesques from the 19th Century with a contemporary approach. Bw Nista International taps into the utterly functional grid-based Swiss style thanks to its strict and rational shapes, removing all quiriness from its Grotesk sibling, while Bw Nista Geometric offers a minimalistic interpretation of the genre, achieving an even simpler and cleaner feel.*

### Light

*Bw Nista Grotesk's clean shapes are peppered with subdued quirky details, marrying the more human feel of the early grotesques from the 19th Century with a contemporary approach. Bw Nista International taps into the utterly functional grid-based Swiss style thanks to its strict and rational shapes, removing all quiriness from its Grotesk sibling, while Bw Nista Geometric offers a minimalistic interpretation of the genre, achieving an even simpler and cleaner feel.*

### Regular

*Bw Nista Grotesk's clean shapes are peppered with subdued quirky details, marrying the more human feel of the early grotesques from the 19th Century with a contemporary approach. Bw Nista International taps into the utterly functional grid-based Swiss style thanks to its strict and rational shapes, removing all quiriness from its Grotesk sibling, while Bw Nista Geometric offers a minimalistic interpretation of the genre, achieving an even simpler and cleaner feel.*

### Medium

*Bw Nista Grotesk's clean shapes are peppered with subdued quirky details, marrying the more human feel of the early grotesques from the 19th Century with a contemporary approach. Bw Nista International taps into the utterly functional grid-based Swiss style thanks to its strict and rational shapes, removing all quiriness from its Grotesk sibling, while Bw Nista Geometric offers a minimalistic interpretation of the genre, achieving an even simpler and cleaner feel.*

### Bold

***Bw Nista Grotesk's clean shapes are peppered with subdued quirky details, marrying the more human feel of the early grotesques from the 19th Century with a contemporary approach. Bw Nista International taps into the utterly functional grid-based Swiss style thanks to its strict and rational shapes, removing all quiriness from its Grotesk sibling, while Bw Nista Geometric offers a minimalistic interpretation of the genre, achieving an even simpler and cleaner feel.***

### ExtraBold

***Bw Nista Grotesk's clean shapes are peppered with subdued quirky details, marrying the more human feel of the early grotesques from the 19th Century with a contemporary approach. Bw Nista International taps into the utterly functional grid-based Swiss style thanks to its strict and rational shapes, removing all quiriness from its Grotesk sibling, while Bw Nista Geometric offers a minimalistic interpretation of the genre, achieving an even simpler and cleaner feel.***

### Black

***Bw Nista Grotesk's clean shapes are peppered with subdued quirky details, marrying the more human feel of the early grotesques from the 19th Century with a contemporary approach. Bw Nista International taps into the utterly functional grid-based Swiss style thanks to its strict and rational shapes, removing all quiriness from its Grotesk sibling, while Bw Nista Geometric offers a minimalistic interpretation of the genre, achieving an even simpler and cleaner feel.***

**International. Uprights sample headline 24/28pt**

---

Thin

A WIZARD'S JOB IS TO VEX  
CHUMPS QUICKLY IN FOG

Light

“FIX, SCHWYZ!” QUÄKT  
JÜRGEN BLÖD VOM PAß

Regular

WHISKY BUENO: ¡EXCITAD  
MI FRÁGIL PEQUEÑA VEJEZ!

Medium

PÓJDŹ W LOCH ZBIĆ  
MAŁŻEŃSKĄ GĘŚ FUTRYN!

Bold

VOYEZ LE BRICK GÉANT QUE  
J'EXAMINE PRÈS DU WHARF

ExtraBold

MUZICOLOGĂ ÎN BEJ VÂND  
WHISKY ŞI TEQUILA, PREŢ FIX

Black

SEE VÄIKE MÖLDER  
JÕUAB RONGILE HÜPATA

**International. Italics sample headline 24/28pt**

---

*Thin*

ÖKÜZ AJAN HAPSE DÜŞTÜ  
YAVRUM, OCAĞI FELÇ GIBI

*Light*

PIŠKUR MOLČE GRABI FIŽOL  
Z DNA CEZIJEVERE HOSTE

*Regular*

ÞÚ DAZT Á HNÉÐ Í VÖK OG  
YFIR BLÓM SEXÝ PÆJU

*Medium*

SIC FUGIENS, DUX, ZELOTYPOS,  
QUAM KARUS HABERIS

*Bold*

KŘDEL' ĎATĻOV UČÍ KOŇA  
ŽRAŤ KÔRU

*ExtraBold*

QUALCHE NOTIZIA PAVESE  
MI FA SBADIGLIARE

*Black*

BYXFJÄRMAT FÖL GICK  
PÅ DUVSHOWEN

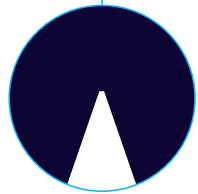


# Bw Nista Geometric

ascender height  
= cap height

circular dots  
and punctuation

A1úlagitC



subtle  
inktraps

spurless  
/u/ and /G/

single storey  
/a/ and /g/

rounder /C/, /G/,  
/O/ and /Q/



# Bw Nista Geometric

### Extended Latin uppercase

A Á Ă Â Ä À Ā Ą Å Æ B C Č Ć Ć  
 Ć D Đ Ď Ę E É Ě Ê Ě È Ě Ę F G Ğ  
 Ğ Ğ H Ħ I Í Î Ï Ì Ī J J K Ķ L Ł Ľ Ļ  
 Ł M N Ń Ņ ņ Ŋ Ñ O Ó Ô Õ Ò Õ Ò  
 Ø Õ Œ P Þ Q R Ŕ Ŗ Ŕ S Ś Š Ş Ş ß  
 T Ƨ Ƨ Ƨ U Ú Û Ü Ù Ū Ū Ū V W W  
 W Ẁ X Y Ý Ŷ ŷ Ÿ Z Ž Ž Ž

### Extended Latin lowercase

a á ă â ä à ā ą å Æ b c č ć Ć Ć  
 Ć d' đ e é ě ê ě è ě ę f g ğ ğ h  
 ħ i í î ï ì ï ĵ ĵ ĵ ĵ k ķ l ł ĺ ĺ  
 ŋ ŋ ñ o ó ô õ ò ó õ ø ð œ p þ q r r  
 ŕ ŕ s ś š ş ş ß t Ƨ Ƨ Ƨ u ú û ü ù ū ū  
 ŷ ŷ v w w Ẁ x y ý ŷ ŷ ŷ z ž ž ž

### Ligatures

fb ff ffb ffh ffi ffj ffl fft fh fi fj fk ft  
fi fl tt

### Proportional lining figures

1234567890

### Tabular lining figures

1234567890

### Proportional old style figures

1234567890 # ¢ \$ € £ ¥ % ‰

### Fractions

1/2 1/3 2/3 3/4 1/5 2/5 1/6 1/7 3/8 1/10 12345/67890

### Symbols and punctuation

\* \ . . : , ... ! ; # . ? ¿ ° ' " ; / \_ { } [ ] ( )  
 ) — — — « » ‹ › „ “ ” ‘ ’ , € ¢ ¤ \$ f £  
 ¥ ≈ ~ ÷ ø = > ≥ ∞ ∫ < ≤ ¬ - x ≠ ∂ % ‰  
 + ± Δ Ω μ π Π √ Σ ∎ ∣ ∥ @ & ¶ © ® §  
 ™ ^ + ≠ < > ^ † ‡

### Case sensitive forms

\ i ¿ / # { } [ ] ( ) — — — « » ‹ › + - × ÷  
 = ≠ > < ≥ ≤ ± ¬

## Geometric. Uprights sample paragraph 8/12pt

---

### Thin

Bw Nista Grotesk's clean shapes are peppered with subdued quirky details, marrying the more human feel of the early grotesques from the 19th Century with a contemporary approach. Bw Nista International taps into the utterly functional grid-based Swiss style thanks to its strict and rational shapes, removing all quiriness from its Grotesk sibling, while Bw Nista Geometric offers a minimalistic interpretation of the genre, achieving an even simpler and cleaner feel.

### Light

Bw Nista Grotesk's clean shapes are peppered with subdued quirky details, marrying the more human feel of the early grotesques from the 19th Century with a contemporary approach. Bw Nista International taps into the utterly functional grid-based Swiss style thanks to its strict and rational shapes, removing all quiriness from its Grotesk sibling, while Bw Nista Geometric offers a minimalistic interpretation of the genre, achieving an even simpler and cleaner feel.

### Regular

Bw Nista Grotesk's clean shapes are peppered with subdued quirky details, marrying the more human feel of the early grotesques from the 19th Century with a contemporary approach. Bw Nista International taps into the utterly functional grid-based Swiss style thanks to its strict and rational shapes, removing all quiriness from its Grotesk sibling, while Bw Nista Geometric offers a minimalistic interpretation of the genre, achieving an even simpler and cleaner feel.

### Medium

Bw Nista Grotesk's clean shapes are peppered with subdued quirky details, marrying the more human feel of the early grotesques from the 19th Century with a contemporary approach. Bw Nista International taps into the utterly functional grid-based Swiss style thanks to its strict and rational shapes, removing all quiriness from its Grotesk sibling, while Bw Nista Geometric offers a minimalistic interpretation of the genre, achieving an even simpler and cleaner feel.

### Bold

**Bw Nista Grotesk's clean shapes are peppered with subdued quirky details, marrying the more human feel of the early grotesques from the 19th Century with a contemporary approach. Bw Nista International taps into the utterly functional grid-based Swiss style thanks to its strict and rational shapes, removing all quiriness from its Grotesk sibling, while Bw Nista Geometric offers a minimalistic interpretation of the genre, achieving an even simpler and cleaner feel.**

### ExtraBold

**Bw Nista Grotesk's clean shapes are peppered with subdued quirky details, marrying the more human feel of the early grotesques from the 19th Century with a contemporary approach. Bw Nista International taps into the utterly functional grid-based Swiss style thanks to its strict and rational shapes, removing all quiriness from its Grotesk sibling, while Bw Nista Geometric offers a minimalistic interpretation of the genre, achieving an even simpler and cleaner feel.**

### Black

**Bw Nista Grotesk's clean shapes are peppered with subdued quirky details, marrying the more human feel of the early grotesques from the 19th Century with a contemporary approach. Bw Nista International taps into the utterly functional grid-based Swiss style thanks to its strict and rational shapes, removing all quiriness from its Grotesk sibling, while Bw Nista Geometric offers a minimalistic interpretation of the genre, achieving an even simpler and cleaner feel.**

## Geometric. Italics sample paragraph 8/12pt

---

### Thin

*Bw Nista Grotesk's clean shapes are peppered with subdued quirky details, marrying the more human feel of the early grotesques from the 19th Century with a contemporary approach. Bw Nista International taps into the utterly functional grid-based Swiss style thanks to its strict and rational shapes, removing all quiriness from its Grotesk sibling, while Bw Nista Geometric offers a minimalistic interpretation of the genre, achieving an even simpler and cleaner feel.*

### Light

*Bw Nista Grotesk's clean shapes are peppered with subdued quirky details, marrying the more human feel of the early grotesques from the 19th Century with a contemporary approach. Bw Nista International taps into the utterly functional grid-based Swiss style thanks to its strict and rational shapes, removing all quiriness from its Grotesk sibling, while Bw Nista Geometric offers a minimalistic interpretation of the genre, achieving an even simpler and cleaner feel.*

### Regular

*Bw Nista Grotesk's clean shapes are peppered with subdued quirky details, marrying the more human feel of the early grotesques from the 19th Century with a contemporary approach. Bw Nista International taps into the utterly functional grid-based Swiss style thanks to its strict and rational shapes, removing all quiriness from its Grotesk sibling, while Bw Nista Geometric offers a minimalistic interpretation of the genre, achieving an even simpler and cleaner feel.*

### Medium

*Bw Nista Grotesk's clean shapes are peppered with subdued quirky details, marrying the more human feel of the early grotesques from the 19th Century with a contemporary approach. Bw Nista International taps into the utterly functional grid-based Swiss style thanks to its strict and rational shapes, removing all quiriness from its Grotesk sibling, while Bw Nista Geometric offers a minimalistic interpretation of the genre, achieving an even simpler and cleaner feel.*

### Bold

***Bw Nista Grotesk's clean shapes are peppered with subdued quirky details, marrying the more human feel of the early grotesques from the 19th Century with a contemporary approach. Bw Nista International taps into the utterly functional grid-based Swiss style thanks to its strict and rational shapes, removing all quiriness from its Grotesk sibling, while Bw Nista Geometric offers a minimalistic interpretation of the genre, achieving an even simpler and cleaner feel.***

### ExtraBold

***Bw Nista Grotesk's clean shapes are peppered with subdued quirky details, marrying the more human feel of the early grotesques from the 19th Century with a contemporary approach. Bw Nista International taps into the utterly functional grid-based Swiss style thanks to its strict and rational shapes, removing all quiriness from its Grotesk sibling, while Bw Nista Geometric offers a minimalistic interpretation of the genre, achieving an even simpler and cleaner feel.***

### Black

***Bw Nista Grotesk's clean shapes are peppered with subdued quirky details, marrying the more human feel of the early grotesques from the 19th Century with a contemporary approach. Bw Nista International taps into the utterly functional grid-based Swiss style thanks to its strict and rational shapes, removing all quiriness from its Grotesk sibling, while Bw Nista Geometric offers a minimalistic interpretation of the genre, achieving an even simpler and cleaner feel.***

**Geometric. Uprights sample headline 24/28pt**

---

Thin

A WIZARD'S JOB IS TO VEX  
CHUMPS QUICKLY IN FOG

Light

“FIX, SCHWYZ!” QUÄKT  
JÜRGEN BLÖD VOM PAß

Regular

WHISKY BUENO: ¡EXCITAD  
MI FRÁGIL PEQUEÑA VEJEZ!

Medium

PÓJDŹ W LOCH ZBIĆ  
MAŁŻEŃSKĄ GĘŚ FUTRYN!

Bold

VOYEZ LE BRICK GÉANT QUE  
J'EXAMINE PRÈS DU WHARF

ExtraBold

MUZICOLOGĂ ÎN BEJ VÂND  
WHISKY ŞI TEQUILA, PREŢ FIX

Black

SEE VÄIKE MÖLDER  
JÕUAB RONGILE HÛPATA

**International. Italics sample headline 24/28pt**

---

*Thin*

ÖKÜZ AJAN HAPSE DÜŞTÜ  
YAVRUM, OCAĞI FELÇ GIBI

*Light*

PIŠKUR MOLČE GRABI FIŽOL  
Z DNA CEZIJEVE HOSTE

*Regular*

ÞÚ DAZT Á HNÉÐ Í VÖK OG  
YFIR BLÓM SEXÝ PÆJU

*Medium*

SIC FUGIENS, DUX, ZELOTYPOS,  
QUAM KARUS HABERIS

*Bold*

KŔDEL' ĎATĻOV UČÍ KOŇA  
ŽRAŤ KÔRU

*ExtraBold*

QUALCHE NOTIZIA PAVESE  
MI FA SBADIGLIARE

*Black*

BYXFJÄRMAT FÖL GICK  
PÅ DUVSHOWEN

**Branding with Type**

Maria Montessori 8  
Zaragoza, Spain

+34 635 54 04 54  
(10h to 18h CET)

[info@brandingwithtype.com](mailto:info@brandingwithtype.com)

**Browse our full catalogue  
at [brandingwithtype.com](http://brandingwithtype.com)**

# Thanks!