

# Bw Glenn Collection

— type

specimen

## Description

---

The Bw Glenn Collection is formed by two stand-alone subfamilies: Bw Glenn Slab and its grotesque companion Bw Glenn Sans. They're the perfect complement for each other, sharing x-height and modulation as both font families were developed in parallel.

**Bw Glenn Sans** is the result of mixing a grotesque skeleton with traits of the British sans serif tradition. The result is a modern and clean sans serif family that speaks with clarity and authority. Its contained width makes it a favourite for long texts while its distinctive details come to life when used as display.

**Bw Glenn Slab** is a confident and robust font family with a sturdy feel offering no concessions for ambiguity. Its strict geometry and open shapes provide a very legible and clean texture, performing well on print and screens alike.

Designed by Alberto Romanos, each subfamily comes available in 8 weights from Hairline to Black with matching italics, tabular and old style figures, case sensitive forms and many other OpenType features. The Bw Glenn Collection supports Extended Latin, providing designers worldwide with a rich functional palette with that extra bit of personality.

***Licenses are exclusively available from [brandingwithtype.com](http://brandingwithtype.com).***

***Please visit our site for the latest version and information on this font.***

**Bw**  
**Glenn Sans**

---

**Styles**

Hairline *Italic*

Thin *Italic*

Light *Italic*

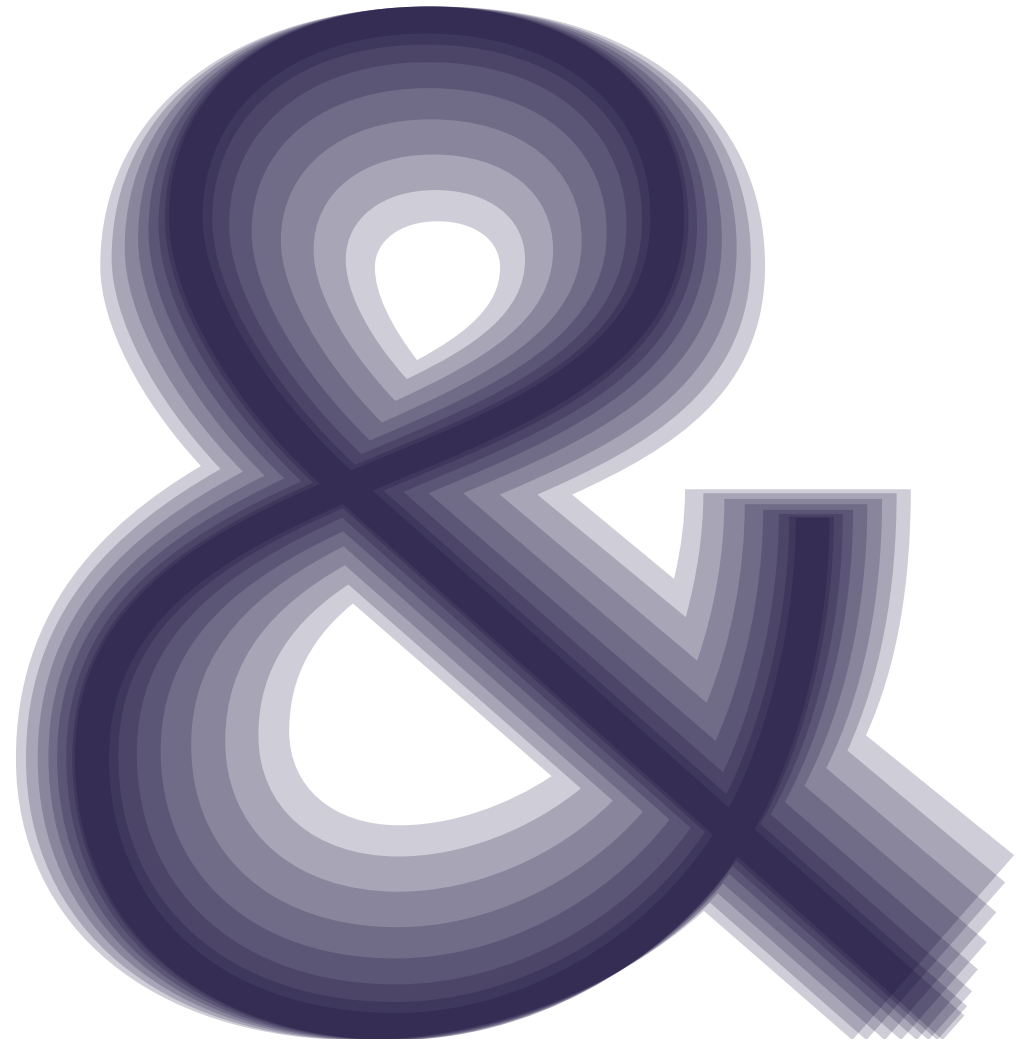
Regular *Italic*

Medium *Italic*

**Bold *Italic***

**ExtraBold *Italic***

**Black *Italic***



Detail

---

tabular  
figures

1

diacritics  
aligned with  
ascender

shaved  
endings

B 2

kúife,

grotesque  
structure

long tail  
for better  
legibility

3

methodical

cleanliness

**grotesque**

**authority**

*confidence*

*thoughtful*

***geometric***

***approach***

**Uprights sample sentence 30/30pt**

---

Hairline

Luxury is the triumph  
of appearance over  
substance.

Thin

Luxury is the triumph  
of appearance over  
substance.

Light

Luxury is the triumph  
of appearance over  
substance.

Regular

Luxury is the triumph  
of appearance over  
substance.

Medium

**Luxury is the triumph  
of appearance over  
substance.**

Bold

**Luxury is the triumph  
of appearance over  
substance.**

ExtraBold

**Luxury is the triumph  
of appearance over  
substance.**

Black

**Luxury is the triumph  
of appearance over  
substance.**

**Italics sample sentence 30/30pt**

---

Hairline

*Luxury is the triumph  
of appearance over  
substance.*

Thin

*Luxury is the triumph  
of appearance over  
substance.*

Light

*Luxury is the triumph  
of appearance over  
substance.*

Regular

*Luxury is the triumph  
of appearance over  
substance.*

Medium

***Luxury is the triumph  
of appearance over  
substance.***

Bold

***Luxury is the triumph  
of appearance over  
substance.***

ExtraBold

***Luxury is the triumph  
of appearance over  
substance.***

Black

***Luxury is the triumph  
of appearance over  
substance.***



**Uprights sample sentence 30/30pt ALL CAPS**

---

Hairline

LUXURY IS THE TRIUMPH  
OF APPEARANCE OVER  
SUBSTANCE.

Thin

LUXURY IS THE TRIUMPH  
OF APPEARANCE OVER  
SUBSTANCE.

Light

LUXURY IS THE TRIUMPH  
OF APPEARANCE OVER  
SUBSTANCE.

Regular

LUXURY IS THE TRIUMPH  
OF APPEARANCE OVER  
SUBSTANCE.

Medium

LUXURY IS THE TRIUMPH  
OF APPEARANCE OVER  
SUBSTANCE.

Bold

LUXURY IS THE TRIUMPH  
OF APPEARANCE OVER  
SUBSTANCE.

ExtraBold

LUXURY IS THE TRIUMPH  
OF APPEARANCE OVER  
SUBSTANCE.

Black

LUXURY IS THE TRIUMPH  
OF APPEARANCE OVER  
SUBSTANCE.

**Italics sample sentence 30/30pt ALL CAPS**

---

Hairline

LUXURY IS THE TRIUMPH  
OF APPEARANCE OVER  
SUBSTANCE.

Thin

LUXURY IS THE TRIUMPH  
OF APPEARANCE OVER  
SUBSTANCE.

Light

LUXURY IS THE TRIUMPH  
OF APPEARANCE OVER  
SUBSTANCE.

Regular

LUXURY IS THE TRIUMPH  
OF APPEARANCE OVER  
SUBSTANCE.

Medium

LUXURY IS THE TRIUMPH  
OF APPEARANCE OVER  
SUBSTANCE.

Bold

LUXURY IS THE TRIUMPH  
OF APPEARANCE OVER  
SUBSTANCE.

ExtraBold

LUXURY IS THE TRIUMPH  
OF APPEARANCE OVER  
SUBSTANCE.

Black

LUXURY IS THE TRIUMPH  
OF APPEARANCE OVER  
SUBSTANCE.

## Uprights sample paragraph 8/12pt

---

### Hairline

Bw Glenn Sans is the result of mixing a grotesque skeleton with traits of the British sans serif tradition. The result is a modern and clean sans serif family that speaks with clarity and authority. Its contained width makes it a favourite for long texts while its distinctive details come to life when used as display. It's also the grotesque companion of Bw Glenn Slab. They're the perfect complement for each other, sharing x-height and modulation as both font families were developed in parallel. Designed by Alberto Romanos, Bw Glenn Sans comes available in 8 weights from Hairline to Black with matching italics, tabular and old style figures, case sensitive forms and many other OpenType features. Bw Glenn Sans supports Extended Latin, providing designers worldwide with a rich functional palette with that extra bit of personality.

### Thin

Bw Glenn Sans is the result of mixing a grotesque skeleton with traits of the British sans serif tradition. The result is a modern and clean sans serif family that speaks with clarity and authority. Its contained width makes it a favourite for long texts while its distinctive details come to life when used as display. It's also the grotesque companion of Bw Glenn Slab. They're the perfect complement for each other, sharing x-height and modulation as both font families were developed in parallel. Designed by Alberto Romanos, Bw Glenn Sans comes available in 8 weights from Hairline to Black with matching italics, tabular and old style figures, case sensitive forms and many other OpenType features. Bw Glenn Sans supports Extended Latin, providing designers worldwide with a rich functional palette with that extra bit of personality.

### Light

Bw Glenn Sans is the result of mixing a grotesque skeleton with traits of the British sans serif tradition. The result is a modern and clean sans serif family that speaks with clarity and authority. Its contained width makes it a favourite for long texts while its distinctive details come to life when used as display. It's also the grotesque companion of Bw Glenn Slab. They're the perfect complement for each other, sharing x-height and modulation as both font families were developed in parallel. Designed by Alberto Romanos, Bw Glenn Sans comes available in 8 weights from Hairline to Black with matching italics, tabular and old style figures, case sensitive forms and many other OpenType features. Bw Glenn Sans supports Extended Latin, providing designers worldwide with a rich functional palette with that extra bit of personality.

### Regular

Bw Glenn Sans is the result of mixing a grotesque skeleton with traits of the British sans serif tradition. The result is a modern and clean sans serif family that speaks with clarity and authority. Its contained width makes it a favourite for long texts while its distinctive details come to life when used as display. It's also the grotesque companion of Bw Glenn Slab. They're the perfect complement for each other, sharing x-height and modulation as both font families were developed in parallel. Designed by Alberto Romanos, Bw Glenn Sans comes available in 8 weights from Hairline to Black with matching italics, tabular and old style figures, case sensitive forms and many other OpenType features. Bw Glenn Sans supports Extended Latin, providing designers worldwide with a rich functional palette with that extra bit of personality.

### Medium

Bw Glenn Sans is the result of mixing a grotesque skeleton with traits of the British sans serif tradition. The result is a modern and clean sans serif family that speaks with clarity and authority. Its contained width makes it a favourite for long texts while its distinctive details come to life when used as display. It's also the grotesque companion of Bw Glenn Slab. They're the perfect complement for each other, sharing x-height and modulation as both font families were developed in parallel. Designed by Alberto Romanos, Bw Glenn Sans comes available in 8 weights from Hairline to Black with matching italics, tabular and old style figures, case sensitive forms and many other OpenType features. Bw Glenn Sans supports Extended Latin, providing designers worldwide with a rich functional palette with that extra bit of personality.

### Bold

**Bw Glenn Sans is the result of mixing a grotesque skeleton with traits of the British sans serif tradition. The result is a modern and clean sans serif family that speaks with clarity and authority. Its contained width makes it a favourite for long texts while its distinctive details come to life when used as display. It's also the grotesque companion of Bw Glenn Slab. They're the perfect complement for each other, sharing x-height and modulation as both font families were developed in parallel. Designed by Alberto Romanos, Bw Glenn Sans comes available in 8 weights from Hairline to Black with matching italics, tabular and old style figures, case sensitive forms and many other OpenType features. Bw Glenn Sans supports Extended Latin, providing designers worldwide with a rich functional palette with that extra bit of personality.**

### ExtraBold

**Bw Glenn Sans is the result of mixing a grotesque skeleton with traits of the British sans serif tradition. The result is a modern and clean sans serif family that speaks with clarity and authority. Its contained width makes it a favourite for long texts while its distinctive details come to life when used as display. It's also the grotesque companion of Bw Glenn Slab. They're the perfect complement for each other, sharing x-height and modulation as both font families were developed in parallel. Designed by Alberto Romanos, Bw Glenn Sans comes available in 8 weights from Hairline to Black with matching italics, tabular and old style figures, case sensitive forms and many other OpenType features. Bw Glenn Sans supports Extended Latin, providing designers worldwide with a rich functional palette with that extra bit of personality.**

### Black

**Bw Glenn Sans is the result of mixing a grotesque skeleton with traits of the British sans serif tradition. The result is a modern and clean sans serif family that speaks with clarity and authority. Its contained width makes it a favourite for long texts while its distinctive details come to life when used as display. It's also the grotesque companion of Bw Glenn Slab. They're the perfect complement for each other, sharing x-height and modulation as both font families were developed in parallel. Designed by Alberto Romanos, Bw Glenn Sans comes available in 8 weights from Hairline to Black with matching italics, tabular and old style figures, case sensitive forms and many other OpenType features. Bw Glenn Sans supports Extended Latin, providing designers worldwide with a rich functional palette with that extra bit of personality.**

## Italics sample paragraph 8/12pt

---

### Hairline

*Bw Glenn Sans is the result of mixing a grotesque skeleton with traits of the British sans serif tradition. The result is a modern and clean sans serif family that speaks with clarity and authority. Its contained width makes it a favourite for long texts while its distinctive details come to life when used as display. It's also the grotesque companion of Bw Glenn Slab. They're the perfect complement for each other, sharing x-height and modulation as both font families were developed in parallel. Designed by Alberto Romanos, Bw Glenn Sans comes available in 8 weights from Hairline to Black with matching italics, tabular and old style figures, case sensitive forms and many other OpenType features. Bw Glenn Sans supports Extended Latin, providing designers worldwide with a rich functional palette with that extra bit of personality.*

### Thin

*Bw Glenn Sans is the result of mixing a grotesque skeleton with traits of the British sans serif tradition. The result is a modern and clean sans serif family that speaks with clarity and authority. Its contained width makes it a favourite for long texts while its distinctive details come to life when used as display. It's also the grotesque companion of Bw Glenn Slab. They're the perfect complement for each other, sharing x-height and modulation as both font families were developed in parallel. Designed by Alberto Romanos, Bw Glenn Sans comes available in 8 weights from Hairline to Black with matching italics, tabular and old style figures, case sensitive forms and many other OpenType features. Bw Glenn Sans supports Extended Latin, providing designers worldwide with a rich functional palette with that extra bit of personality.*

### Light

*Bw Glenn Sans is the result of mixing a grotesque skeleton with traits of the British sans serif tradition. The result is a modern and clean sans serif family that speaks with clarity and authority. Its contained width makes it a favourite for long texts while its distinctive details come to life when used as display. It's also the grotesque companion of Bw Glenn Slab. They're the perfect complement for each other, sharing x-height and modulation as both font families were developed in parallel. Designed by Alberto Romanos, Bw Glenn Sans comes available in 8 weights from Hairline to Black with matching italics, tabular and old style figures, case sensitive forms and many other OpenType features. Bw Glenn Sans supports Extended Latin, providing designers worldwide with a rich functional palette with that extra bit of personality.*

### Regular

*Bw Glenn Sans is the result of mixing a grotesque skeleton with traits of the British sans serif tradition. The result is a modern and clean sans serif family that speaks with clarity and authority. Its contained width makes it a favourite for long texts while its distinctive details come to life when used as display. It's also the grotesque companion of Bw Glenn Slab. They're the perfect complement for each other, sharing x-height and modulation as both font families were developed in parallel. Designed by Alberto Romanos, Bw Glenn Sans comes available in 8 weights from Hairline to Black with matching italics, tabular and old style figures, case sensitive forms and many other OpenType features. Bw Glenn Sans supports Extended Latin, providing designers worldwide with a rich functional palette with that extra bit of personality.*

### Medium

*Bw Glenn Sans is the result of mixing a grotesque skeleton with traits of the British sans serif tradition. The result is a modern and clean sans serif family that speaks with clarity and authority. Its contained width makes it a favourite for long texts while its distinctive details come to life when used as display. It's also the grotesque companion of Bw Glenn Slab. They're the perfect complement for each other, sharing x-height and modulation as both font families were developed in parallel. Designed by Alberto Romanos, Bw Glenn Sans comes available in 8 weights from Hairline to Black with matching italics, tabular and old style figures, case sensitive forms and many other OpenType features. Bw Glenn Sans supports Extended Latin, providing designers worldwide with a rich functional palette with that extra bit of personality.*

### Bold

***Bw Glenn Sans is the result of mixing a grotesque skeleton with traits of the British sans serif tradition. The result is a modern and clean sans serif family that speaks with clarity and authority. Its contained width makes it a favourite for long texts while its distinctive details come to life when used as display. It's also the grotesque companion of Bw Glenn Slab. They're the perfect complement for each other, sharing x-height and modulation as both font families were developed in parallel. Designed by Alberto Romanos, Bw Glenn Sans comes available in 8 weights from Hairline to Black with matching italics, tabular and old style figures, case sensitive forms and many other OpenType features. Bw Glenn Sans supports Extended Latin, providing designers worldwide with a rich functional palette with that extra bit of personality.***

### ExtraBold

***Bw Glenn Sans is the result of mixing a grotesque skeleton with traits of the British sans serif tradition. The result is a modern and clean sans serif family that speaks with clarity and authority. Its contained width makes it a favourite for long texts while its distinctive details come to life when used as display. It's also the grotesque companion of Bw Glenn Slab. They're the perfect complement for each other, sharing x-height and modulation as both font families were developed in parallel. Designed by Alberto Romanos, Bw Glenn Sans comes available in 8 weights from Hairline to Black with matching italics, tabular and old style figures, case sensitive forms and many other OpenType features. Bw Glenn Sans supports Extended Latin, providing designers worldwide with a rich functional palette with that extra bit of personality.***

### Black

***Bw Glenn Sans is the result of mixing a grotesque skeleton with traits of the British sans serif tradition. The result is a modern and clean sans serif family that speaks with clarity and authority. Its contained width makes it a favourite for long texts while its distinctive details come to life when used as display. It's also the grotesque companion of Bw Glenn Slab. They're the perfect complement for each other, sharing x-height and modulation as both font families were developed in parallel. Designed by Alberto Romanos, Bw Glenn Sans comes available in 8 weights from Hairline to Black with matching italics, tabular and old style figures, case sensitive forms and many other OpenType features. Bw Glenn Sans supports Extended Latin, providing designers worldwide with a rich functional palette with that extra bit of personality.***

Character set. Uprights

Extended Latin uppercase

A Á Ā Ä Å Æ B C Č Ć
Ç Ċ Đ Ď Ę É Ê Ë È Ē Ę
F G Ğ Ġ Ĥ Ħ İ Í Î Ï Ĳ Ĵ Ķ
L Ł Ľ Ł̣ M N Ń Ņ ņ Ŋ Ō Ó Ô
Ö Ò Ő Œ Ø Æ P ϐ Q R Ŗ Ţ
S Ś Š Ṣ̌ β τ ƒ ŧ Ũ Ú Û Ü Û
Ŭ Ū Ŷ Ů V W Ű Ŵ Ŷ Ŵ X Y Ý Ŷ
ÿ ÿ Z Ź Ž ž

Extended Latin lowercase

a á ă â ä à ā ą å ã æ b c ć ċ
č đ ě ē ě ê ë è ē ģ ģ
ğ ħ i í î ï ï ĳ ĵ Ķ Ĳ Ĳ
ł m n ŋ ñ ŋ ñ o ó ô õ ò ó õ ø
œ p ϐ q r Ŗ Ţ s ś š ṣ̌ β t ƒ
ŧ Ũ Ú Û Ü Û Ŭ Ū Ŷ Ů V W Ű Ŵ Ŷ Ŵ
X Y Ý Ŷ ÿ ÿ Z Ź Ž ž

Stylistic Set 01 alternates

a á ă â ä à ā ą å ã g ĝ ġ ģ
y ú û ü ù

Symbols and punctuation

\* \ | . : ; , ... ! ¡ ¢ £ \$ % & ' ( ) \* + - , : ;
/ \_ { } [ ] ( ) { } [ ] ( ) — - - - -
- « » < > « » < > „ “ ” ‘ ’ , € € ₠ ₡
\$ \$ f £ £ ¥ ¥ ≈ ~ ÷ ø = > ≥ ∞ ∫
< ≤ − − × ≠ ∂ % ‰ ‰ ‰ ‰ + ± ∏
√ ∑ ∅ ∥ @ & ¶ © ® § ™ ^ + # ' ^
^ ^ " ' ` " - ° ~

Tabular lining figures (default)

1234567890€£\$¥%%

Tabular old style figures

1234567890€£\$¥%%

Fractions

1/2 1/3 2/3 3/4 1/5 2/5 1/6 1/7 3/8 1/10 12345/67890

Case sensitive

¿i{{{(Ca-se)}}} ¿i{{{(CA-SE)}}}

Superior and inferior figures

Su1234 In5678 Su<sup>12345</sup> In<sub>67890</sub>

**Character set. Italics**

**Extended Latin uppercase**

A Á Ā Ą Â Ä À Ā Ą Å Æ B C Č Ć  
 Ç Ć D Đ Ď Ę E É Ě Ê Ę È Ě Ę  
 F G Ğ Ġ Ģ H Ĩ Í Î Ï Ĳ Ĵ Ķ  
 L Ł Ľ Ļ M N Ń Ņ ņ Ŋ Ō Ó Ô  
 Ö Ò Ő Œ Ø Õ Œ P Þ Q R R ʀ R  
 S Ś Š Š Œ T ʦ Ŧ ŧ U Ú Û Ü Û  
 Ŭ Ū Ů Ű V W Ẃ Ẅ Ẇ X Y Ẏ Ỳ  
 Ÿ Ẏ Z Ẑ Ẓ Ẕ

**Extended Latin lowercase**

a á ă â ä à ā ą ą ã æ b c č ć ç  
 ĉ Ć đ đ đ e é ě ê ě è ě ě f g  
 ħ ġ ģ ĥ ħ ĩ í î ï ĳ ĵ ħ Ĳ Ĵ  
 ł m n ń ņ ŋ ñ o ó ô ö ò ő õ ø  
 ò œ p þ q r r ʀ r s ś š š Œ t ‡  
 † ‡ † u ú û ü ù ŭ ū ů Ű v w Ẃ Ẅ  
 Ẇ x y Ẏ Ỳ z Ẑ Ẓ Ẕ

**Symbols and punctuation**

\* \ | · · : , ... ! | i # . ? ¿ ¿ ° ' " ; /  
 / \_ { } [ ] ( ) { } [ ] ( ) — — — — —  
 - « » ‹ › ‹ › „ “ ” ‘ ’ , € € ₣ ¤  
 \$ \$ f £ £ ¥ ¥ ≈ ~ ÷ ∅ = > ≥ ∞ ∫  
 < ≤ − − × ≠ ∂ % % ‰ ‰ ‰ ‰ + ± ∏  
 √ ∑ ∅ † † @ & ¶ © ® § ™ ^ + ≠ ‘ ’ ˇ  
 ˘ ˙ ˚ ˛ ˜ ˝ ˞ ˟ ˠ ˡ ˢ ˣ ˤ ˥ ˦ ˧ ˨ ˩ ˪ ˫ ˬ ˭ ˮ ˯ ˰ ˱ ˲ ˳ ˴ ˵ ˶ ˷ ˸ ˹ ˺ ˻ ˼ ˽ ˾ ˿

**Tabular lining figures (default)**

1234567890€£\$¥%‰

**Tabular old style figures**

1234567890€£\$¥%‰

**Fractions**

1/2 1/3 2/3 3/4 1/5 2/5 1/6 1/7 3/8 1/10 12345/67890

**Case sensitive**

¿i{[(Ca-se)]}      ¿i{[(CA-SE)]}

**Superior and inferior figures**

Su1234 In5678      Su<sup>12345</sup> In<sub>67890</sub>

**Bw**

**Glenn Slab**

---

**Styles**

Hairline *Italic*

Thin *Italic*

Light *Italic*

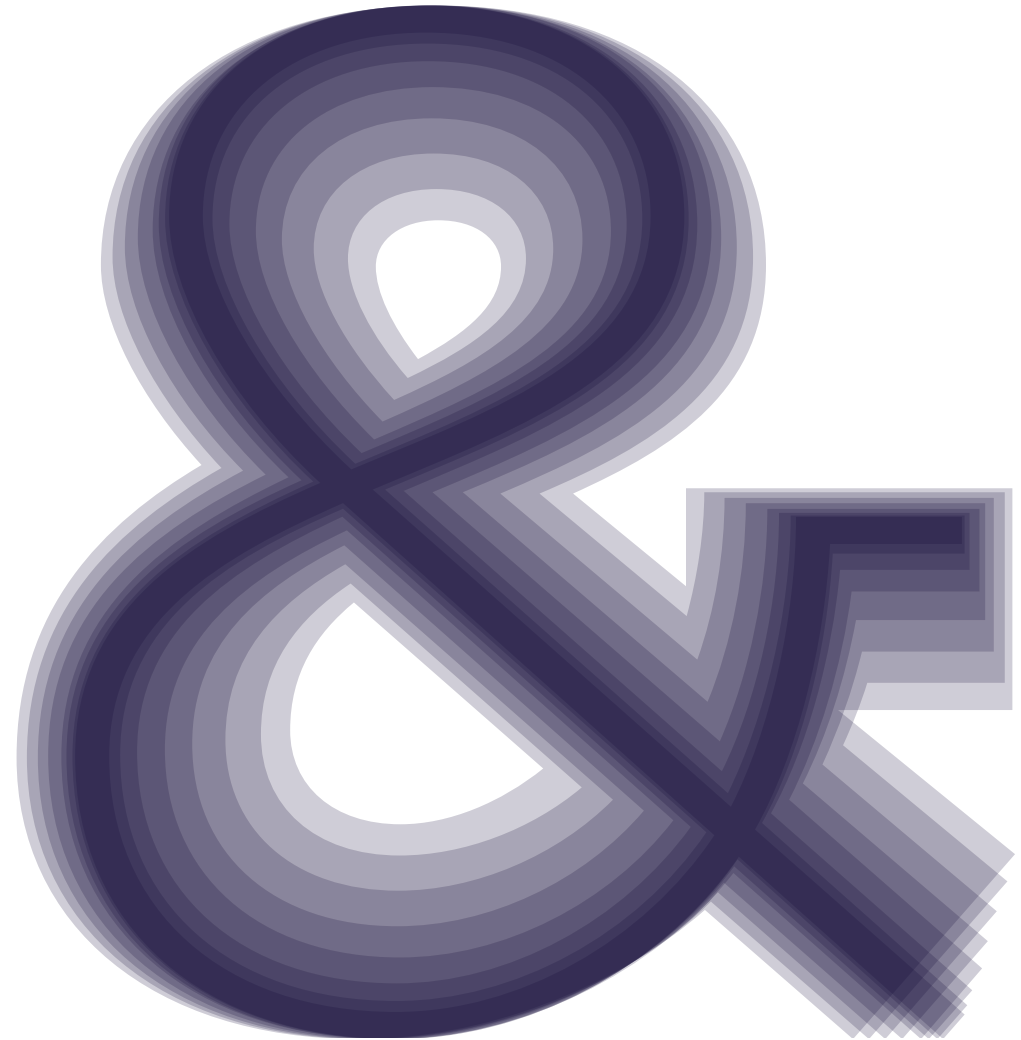
Regular *Italic*

Medium *Italic*

**Bold *Italic***

**ExtraBold *Italic***

**Black *Italic***

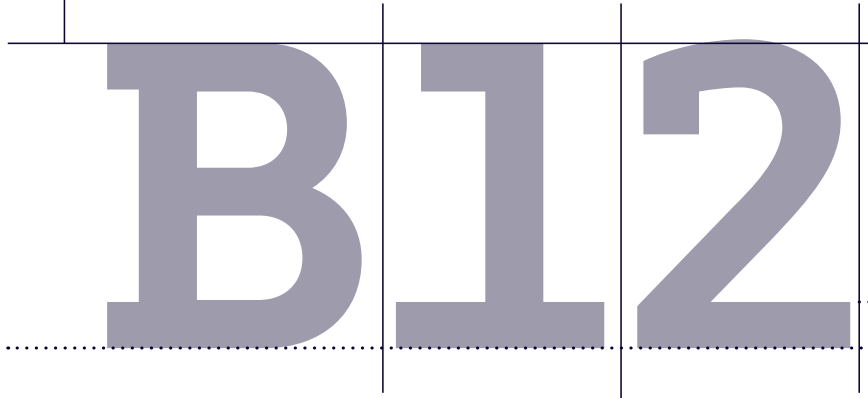




Detail

---

figures match  
cap height



tabular  
figures

mechanical  
feel

interlocking  
slab serifs

diacritics  
aligned with  
ascender



long tail  
for better  
legibility

exuberant

neogrotsk

**mechanic**

**geometry**

*impactful*

*versatility*

***rock-solid***

***energetic***

**Uprights sample sentence 30/30pt**

---

Hairline

Luxury is the triumph  
of appearance over  
substance.

Thin

Luxury is the triumph  
of appearance over  
substance.

Light

Luxury is the triumph  
of appearance over  
substance.

Regular

Luxury is the triumph  
of appearance over  
substance.

Medium

**Luxury is the triumph  
of appearance over  
substance.**

Bold

**Luxury is the triumph  
of appearance over  
substance.**

ExtraBold

**Luxury is the triumph  
of appearance over  
substance.**

Black

**Luxury is the triumph  
of appearance over  
substance.**

**Italics sample sentence 30/30pt**

---

Hairline

*Luxury is the triumph  
of appearance over  
substance.*

Thin

*Luxury is the triumph  
of appearance over  
substance.*

Light

*Luxury is the triumph  
of appearance over  
substance.*

Regular

*Luxury is the triumph  
of appearance over  
substance.*

Medium

**Luxury is the triumph  
of appearance over  
substance.**

Bold

**Luxury is the triumph  
of appearance over  
substance.**

ExtraBold

**Luxury is the triumph  
of appearance over  
substance.**

Black

**Luxury is the triumph  
of appearance over  
substance.**

Uprights sample sentence 30/30pt ALL CAPS

---

Hairline

LUXURY IS THE TRIUMPH  
OF APPEARANCE OVER  
SUBSTANCE.

Thin

LUXURY IS THE TRIUMPH  
OF APPEARANCE OVER  
SUBSTANCE.

Light

LUXURY IS THE TRIUMPH  
OF APPEARANCE OVER  
SUBSTANCE.

Regular

LUXURY IS THE TRIUMPH  
OF APPEARANCE OVER  
SUBSTANCE.

Medium

LUXURY IS THE TRIUMPH  
OF APPEARANCE OVER  
SUBSTANCE.

Bold

LUXURY IS THE TRIUMPH  
OF APPEARANCE OVER  
SUBSTANCE.

ExtraBold

LUXURY IS THE TRIUMPH  
OF APPEARANCE OVER  
SUBSTANCE.

Black

LUXURY IS THE TRIUMPH  
OF APPEARANCE OVER  
SUBSTANCE.

**Italics sample sentence 30/30pt ALL CAPS**

---

Hairline

LUXURY IS THE TRIUMPH  
OF APPEARANCE OVER  
SUBSTANCE.

Thin

LUXURY IS THE TRIUMPH  
OF APPEARANCE OVER  
SUBSTANCE.

Light

LUXURY IS THE TRIUMPH  
OF APPEARANCE OVER  
SUBSTANCE.

Regular

LUXURY IS THE TRIUMPH  
OF APPEARANCE OVER  
SUBSTANCE.

Medium

LUXURY IS THE TRIUMPH  
OF APPEARANCE OVER  
SUBSTANCE.

Bold

LUXURY IS THE TRIUMPH  
OF APPEARANCE OVER  
SUBSTANCE.

ExtraBold

LUXURY IS THE TRIUMPH  
OF APPEARANCE OVER  
SUBSTANCE.

Black

LUXURY IS THE TRIUMPH  
OF APPEARANCE OVER  
SUBSTANCE.

## Uprights sample paragraph 8/12pt

---

### Hairline

Bw Glenn Slab is a confident and robust font family with a sturdy feel offering no concessions for ambiguity. Its strict geometry and open shapes provide a very legible and clean texture, performing well on print and screens alike. It's also the egyptian companion of Bw Glenn Slab. They're the perfect complement for each other, sharing x-height and modulation as both font families were developed in parallel. Designed by Alberto Romanos, Bw Glenn Slab comes available in 8 weights from Hairline to Black with matching italics, tabular and old style figures, case sensitive forms and many other OpenType features. Bw Glenn Slab supports Extended Latin, providing designers worldwide with a rich functional palette with that extra bit of personality.

### Thin

Bw Glenn Slab is a confident and robust font family with a sturdy feel offering no concessions for ambiguity. Its strict geometry and open shapes provide a very legible and clean texture, performing well on print and screens alike. It's also the egyptian companion of Bw Glenn Slab. They're the perfect complement for each other, sharing x-height and modulation as both font families were developed in parallel. Designed by Alberto Romanos, Bw Glenn Slab comes available in 8 weights from Hairline to Black with matching italics, tabular and old style figures, case sensitive forms and many other OpenType features. Bw Glenn Slab supports Extended Latin, providing designers worldwide with a rich functional palette with that extra bit of personality.

### Light

Bw Glenn Slab is a confident and robust font family with a sturdy feel offering no concessions for ambiguity. Its strict geometry and open shapes provide a very legible and clean texture, performing well on print and screens alike. It's also the egyptian companion of Bw Glenn Slab. They're the perfect complement for each other, sharing x-height and modulation as both font families were developed in parallel. Designed by Alberto Romanos, Bw Glenn Slab comes available in 8 weights from Hairline to Black with matching italics, tabular and old style figures, case sensitive forms and many other OpenType features. Bw Glenn Slab supports Extended Latin, providing designers worldwide with a rich functional palette with that extra bit of personality.

### Regular

Bw Glenn Slab is a confident and robust font family with a sturdy feel offering no concessions for ambiguity. Its strict geometry and open shapes provide a very legible and clean texture, performing well on print and screens alike. It's also the egyptian companion of Bw Glenn Slab. They're the perfect complement for each other, sharing x-height and modulation as both font families were developed in parallel. Designed by Alberto Romanos, Bw Glenn Slab comes available in 8 weights from Hairline to Black with matching italics, tabular and old style figures, case sensitive forms and many other OpenType features. Bw Glenn Slab supports Extended Latin, providing designers worldwide with a rich functional palette with that extra bit of personality.

### Medium

Bw Glenn Slab is a confident and robust font family with a sturdy feel offering no concessions for ambiguity. Its strict geometry and open shapes provide a very legible and clean texture, performing well on print and screens alike. It's also the egyptian companion of Bw Glenn Slab. They're the perfect complement for each other, sharing x-height and modulation as both font families were developed in parallel. Designed by Alberto Romanos, Bw Glenn Slab comes available in 8 weights from Hairline to Black with matching italics, tabular and old style figures, case sensitive forms and many other OpenType features. Bw Glenn Slab supports Extended Latin, providing designers worldwide with a rich functional palette with that extra bit of personality.

### Bold

**Bw Glenn Slab is a confident and robust font family with a sturdy feel offering no concessions for ambiguity. Its strict geometry and open shapes provide a very legible and clean texture, performing well on print and screens alike. It's also the egyptian companion of Bw Glenn Slab. They're the perfect complement for each other, sharing x-height and modulation as both font families were developed in parallel. Designed by Alberto Romanos, Bw Glenn Slab comes available in 8 weights from Hairline to Black with matching italics, tabular and old style figures, case sensitive forms and many other OpenType features. Bw Glenn Slab supports Extended Latin, providing designers worldwide with a rich functional palette with that extra bit of personality.**

### ExtraBold

**Bw Glenn Slab is a confident and robust font family with a sturdy feel offering no concessions for ambiguity. Its strict geometry and open shapes provide a very legible and clean texture, performing well on print and screens alike. It's also the egyptian companion of Bw Glenn Slab. They're the perfect complement for each other, sharing x-height and modulation as both font families were developed in parallel. Designed by Alberto Romanos, Bw Glenn Slab comes available in 8 weights from Hairline to Black with matching italics, tabular and old style figures, case sensitive forms and many other OpenType features. Bw Glenn Slab supports Extended Latin, providing designers worldwide with a rich functional palette with that extra bit of personality.**

### Black

**Bw Glenn Slab is a confident and robust font family with a sturdy feel offering no concessions for ambiguity. Its strict geometry and open shapes provide a very legible and clean texture, performing well on print and screens alike. It's also the egyptian companion of Bw Glenn Slab. They're the perfect complement for each other, sharing x-height and modulation as both font families were developed in parallel. Designed by Alberto Romanos, Bw Glenn Slab comes available in 8 weights from Hairline to Black with matching italics, tabular and old style figures, case sensitive forms and many other OpenType features. Bw Glenn Slab supports Extended Latin, providing designers worldwide with a rich functional palette with that extra bit of personality.**

## Italics sample paragraph 8/12pt

---

### Hairline

*Bw Glenn Slab is a confident and robust font family with a sturdy feel offering no concessions for ambiguity. Its strict geometry and open shapes provide a very legible and clean texture, performing well on print and screens alike. It's also the egyptian companion of Bw Glenn Slab. They're the perfect complement for each other, sharing x-height and modulation as both font families were developed in parallel. Designed by Alberto Romanos, Bw Glenn Slab comes available in 8 weights from Hairline to Black with matching italics, tabular and old style figures, case sensitive forms and many other OpenType features. Bw Glenn Slab supports Extended Latin, providing designers worldwide with a rich functional palette with that extra bit of personality.*

### Thin

*Bw Glenn Slab is a confident and robust font family with a sturdy feel offering no concessions for ambiguity. Its strict geometry and open shapes provide a very legible and clean texture, performing well on print and screens alike. It's also the egyptian companion of Bw Glenn Slab. They're the perfect complement for each other, sharing x-height and modulation as both font families were developed in parallel. Designed by Alberto Romanos, Bw Glenn Slab comes available in 8 weights from Hairline to Black with matching italics, tabular and old style figures, case sensitive forms and many other OpenType features. Bw Glenn Slab supports Extended Latin, providing designers worldwide with a rich functional palette with that extra bit of personality.*

### Light

*Bw Glenn Slab is a confident and robust font family with a sturdy feel offering no concessions for ambiguity. Its strict geometry and open shapes provide a very legible and clean texture, performing well on print and screens alike. It's also the egyptian companion of Bw Glenn Slab. They're the perfect complement for each other, sharing x-height and modulation as both font families were developed in parallel. Designed by Alberto Romanos, Bw Glenn Slab comes available in 8 weights from Hairline to Black with matching italics, tabular and old style figures, case sensitive forms and many other OpenType features. Bw Glenn Slab supports Extended Latin, providing designers worldwide with a rich functional palette with that extra bit of personality.*

### Regular

*Bw Glenn Slab is a confident and robust font family with a sturdy feel offering no concessions for ambiguity. Its strict geometry and open shapes provide a very legible and clean texture, performing well on print and screens alike. It's also the egyptian companion of Bw Glenn Slab. They're the perfect complement for each other, sharing x-height and modulation as both font families were developed in parallel. Designed by Alberto Romanos, Bw Glenn Slab comes available in 8 weights from Hairline to Black with matching italics, tabular and old style figures, case sensitive forms and many other OpenType features. Bw Glenn Slab supports Extended Latin, providing designers worldwide with a rich functional palette with that extra bit of personality.*

### Medium

*Bw Glenn Slab is a confident and robust font family with a sturdy feel offering no concessions for ambiguity. Its strict geometry and open shapes provide a very legible and clean texture, performing well on print and screens alike. It's also the egyptian companion of Bw Glenn Slab. They're the perfect complement for each other, sharing x-height and modulation as both font families were developed in parallel. Designed by Alberto Romanos, Bw Glenn Slab comes available in 8 weights from Hairline to Black with matching italics, tabular and old style figures, case sensitive forms and many other OpenType features. Bw Glenn Slab supports Extended Latin, providing designers worldwide with a rich functional palette with that extra bit of personality.*

### Bold

***Bw Glenn Slab is a confident and robust font family with a sturdy feel offering no concessions for ambiguity. Its strict geometry and open shapes provide a very legible and clean texture, performing well on print and screens alike. It's also the egyptian companion of Bw Glenn Slab. They're the perfect complement for each other, sharing x-height and modulation as both font families were developed in parallel. Designed by Alberto Romanos, Bw Glenn Slab comes available in 8 weights from Hairline to Black with matching italics, tabular and old style figures, case sensitive forms and many other OpenType features. Bw Glenn Slab supports Extended Latin, providing designers worldwide with a rich functional palette with that extra bit of personality.***

### ExtraBold

***Bw Glenn Slab is a confident and robust font family with a sturdy feel offering no concessions for ambiguity. Its strict geometry and open shapes provide a very legible and clean texture, performing well on print and screens alike. It's also the egyptian companion of Bw Glenn Slab. They're the perfect complement for each other, sharing x-height and modulation as both font families were developed in parallel. Designed by Alberto Romanos, Bw Glenn Slab comes available in 8 weights from Hairline to Black with matching italics, tabular and old style figures, case sensitive forms and many other OpenType features. Bw Glenn Slab supports Extended Latin, providing designers worldwide with a rich functional palette with that extra bit of personality.***

### Black

***Bw Glenn Slab is a confident and robust font family with a sturdy feel offering no concessions for ambiguity. Its strict geometry and open shapes provide a very legible and clean texture, performing well on print and screens alike. It's also the egyptian companion of Bw Glenn Slab. They're the perfect complement for each other, sharing x-height and modulation as both font families were developed in parallel. Designed by Alberto Romanos, Bw Glenn Slab comes available in 8 weights from Hairline to Black with matching italics, tabular and old style figures, case sensitive forms and many other OpenType features. Bw Glenn Slab supports Extended Latin, providing designers worldwide with a rich functional palette with that extra bit of personality.***



Character set. Uprights

Extended Latin uppercase

A Á Ā Ä Å Æ B C Č  
 Ć Ĉ Ċ Đ Ę É Ě Ê Ë È Ē  
 Ě Ĝ Ğ Ġ Ĩ Í Î Ï Ī Ĵ  
 Œ Ķ Ĺ Ľ Ļ Ľ M N Ń Ņ ņ Ñ  
 Ó Ô Õ Ö Ø Õ Œ P Þ Q R  
 Ř Ŕ Ŗ Š Ś Š Ÿ T Ŧ Ţ Ŧ U  
 Ú Û Ü Ù Ũ Ū Ŭ Ů V W Ẃ Ẅ  
 Ẁ X Y Ý Ŷ Ÿ Ẃ Ẅ Ẁ Ẅ

Extended Latin lowercase

a á ă â ä à ā ą ą ã æ b c ć č  
 ć d ð đ e é ě ê ë è ē ę f g  
 ğ ġ ģ h ħ i í î ï ï ĵ k ķ l ł  
 ł m n ń ñ ņ ŋ ñ o ó ô ö ò ó õ  
 ø ò œ p þ q r ř ŕ s ś š Ÿ Ÿ ß t  
 t t ŧ ŧ u ú û ü ù ũ ū ŭ v w ẁ  
 ẃ ẅ ẇ x y ý ŷ ŷ ẁ ẃ ẅ ẇ

Stylistic Set 01 alternates

ɑ ɑ ǎ ǎ à ā ą ą ǎ ǎ ǎ ǎ

Symbols and punctuation

\* \ \ . . : , ... ! | i # . ? ¿ ¸ ° ' " ; /  
 / \_ { } [ ] ( ) { } [ ] ( ) — — — — —  
 - « » ‹ › ‹ › „ “ ” ‘ ’ , € € ¢ ¤  
 \$ \$ f £ £ ¥ ¥ ≈ ~ ÷ ø = > ≥ ∞ ∫  
 < ≤ − − × ≠ ∂ % ‰ ‰ ‰ ‰ + ± ∏  
 √ ∑ ∏ ∏ @ & ¶ © ® § ™ ^ + # ' °  
 ~ ^ " ' ` " - ° ~

Tabular lining figures (default)

1234567890€£\$¥%%

Tabular old style figures

1234567890€£\$¥%%

Fractions

1/2 1/3 2/3 3/4 1/5 2/5 1/6 1/7 3/8 1/10 12345/67890

Case sensitive

¿i{[(Ca-se)]} ¿i{[(CA-SE)]}

Superior and inferior figures

Su1234 In5678 Su<sup>12345</sup> In<sub>67890</sub>

Character set. Italics

Extended Latin uppercase

A Á Ă Â Ä Å Æ B C Č  
 Ć Ç Ĉ Ċ Đ Ď E É Ě Ê Ë È Ē  
 Ĕ Ė Ğ Ġ Ģ Ĥ Ħ I Í Î Ï Ī Ĵ  
 K Ķ Ĺ Ļ Ľ M N Ń Ņ Ñ Ŋ  
 O Ó Ô Õ Ö Ø Õ Œ P Þ Q R  
 Ř Ŕ Š Ś Š Ś Š ß T Ƨ Ƨ U  
 Ú Û Ü Ù Ů Ů Ů V W Ẃ Ẅ  
 Ẁ X Y Ý Ŷ Ÿ Ẹ Ẹ Ẹ Ẹ Z Ẑ Ẓ Ẕ Ẕ

Extended Latin lowercase

a á ă â ä à ā ą ă ã æ b c č  
 ċ ç ĉ ċ đ ě ê ë è ē ę f  
 g ğ ǧ ǧ h ħ i í î ï ï ĵ k ģ l  
 ł l l m n ń ñ η ñ o ó ô ö ò  
 ő õ ø ã œ p þ q r r r s s s s  
 ş ß t t t t u ú û ü ù ú ů ů v  
 w ẁ ẃ ẅ ẇ ẉ x y ý ŷ ŷ Ẹ Ẹ Ẹ Ẹ z ẑ ẓ ẕ ẕ

Symbols and punctuation

\* \ | · · · : , … ! | i # . ? ¿ ¸ ° ' " ; /  
 / \_ { } [ ] ( ) { } [ ] ( ) — — — — —  
 - « » < > « » < > „ “ ” ‘ ’ , € € ¢ ♂  
 \$ \$ f £ £ ¥ ¥ ≈ ~ ÷ ∅ = > ≥ ∞ ∫  
 < ≤ − − × ≠ ∂ % ‰ ‰ ‰ ‰ + ± ∏  
 √ ∑ ∞ ∞ ∞ ∞ @ & ¶ © ® § ™ ^ + # ' ~  
 √ ∑ ∞ ∞ ∞ ∞ @ & ¶ © ® § ™ ^ + # ' ~

Tabular lining figures (default)

1234567890€£\$¥%‰

Tabular old style figures

1234567890€£\$¥%‰

Fractions

$\frac{1}{2}$   $\frac{1}{3}$   $\frac{2}{3}$   $\frac{3}{4}$   $\frac{1}{5}$   $\frac{2}{5}$   $\frac{1}{6}$   $\frac{1}{7}$   $\frac{3}{8}$   $\frac{1}{10}$  <sup>12345/67890</sup>

Case sensitive

¿i{{{(Ca-se)}}}      ¿i{{{(CA-SE)}}}

Superior and inferior figures

Su1234 In5678      Su<sup>12345</sup> In<sub>67890</sub>

**Branding with Type**

Coso 143. 3b  
50001 Zaragoza  
Spain

+34 635 54 04 54  
(8h to 15h CET)

[info@brandingwithtype.com](mailto:info@brandingwithtype.com)

**Browse our full catalog  
at [brandingwithtype.com](http://brandingwithtype.com)**

***Thanks!***