

**Bw**

**Darius**

*—type*

*specimen*

## Description

---

Bw Darius is an elegant wedge serif typeface, halfway between the transitional and didone genres, with a sharper approach to terminals without falling on the stiffness of the didones. The wide skeleton, modern proportions and high contrast, all contribute to the opulent personality of this font.

Bw Darius comes in 4 weights (from a delicate Light to a robust and sturdy Black) with *matching true italics* and a stencil version, allowing brands to use the different voice tonalities within the same style. Its tall x-height and open apertures makes it fit for display but also body text purposes, performing well both on screen and printed.

It supports all European Latin languages and it includes OpenType features like Old-Style figures, fractions, case sensitive forms, standard ligatures and unusual discretionary ligatures.

**Licensing options are available from [brandingwithtype.com](http://brandingwithtype.com) and selected vendors. Please visit our website for the latest version and information on this font.**

---

**Styles**

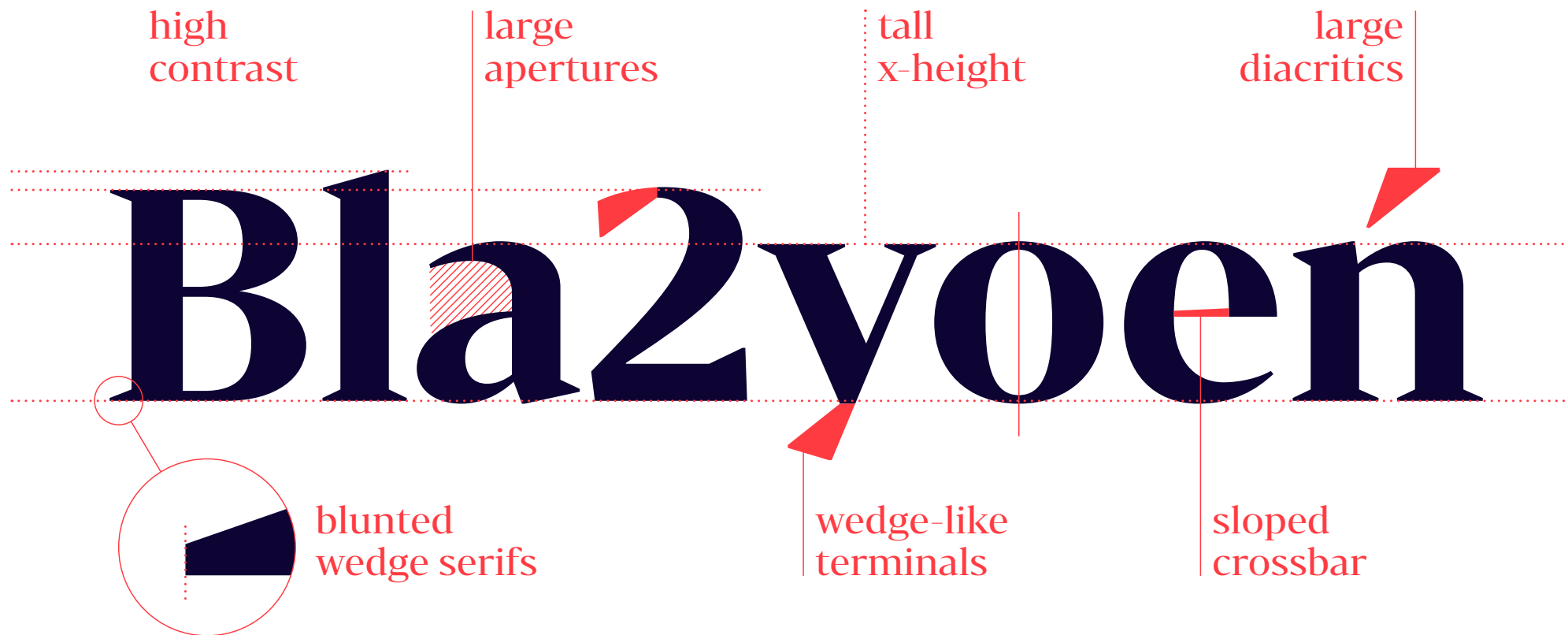
Stencil/Light/*Italic*

Stencil/Regular/*Italic*

Stencil/Bold/*Italic*

Stencil/Black/*Italic*

Detail



*außergewöhnliche*

**GLAMM**

→ **SILVERLINING** ←

Est. 1976

Straight from the catwalk

Caffeine

---

**Samples**

MASCARPONE

*proven track*

**Sweet girls**

## Samples

MR k @ B tt ñ [ œ ] v ø  
Q đ ≈ € ğ AA g % £ a η  
8<sup>o</sup> W g ffb S 7 CE f ŷ ↗  
ö e \* t s ¾ © & # h ffk



Uprights sample sentence 30/30pt

---

Light

Also called the Great,  
he ruled the empire  
at its peak

Regular

Also called the Great,  
he ruled the empire  
at its peak

Bold

Also called the Great,  
he ruled the empire  
at its peak

Black

Also called the Great,  
he ruled the empire  
at its peak

LIGHT

ALSO CALLED THE  
GREAT, HE RULED THE  
EMPIRE AT ITS PEAK

REGULAR

ALSO CALLED THE  
GREAT, HE RULED THE  
EMPIRE AT ITS PEAK

BOLD

ALSO CALLED THE  
GREAT, HE RULED THE  
EMPIRE AT ITS PEAK

BLACK

ALSO CALLED THE  
GREAT, HE RULED THE  
EMPIRE AT ITS PEAK

**Italics sample sentence 30/30pt**

---

*Light*

*Also called the Great,  
he ruled the empire  
at its peak*

*Regular*

*Also called the Great,  
he ruled the empire  
at its peak*

**Bold**

***Also called the Great,  
he ruled the empire  
at its peak***

**Black**

***Also called the Great,  
he ruled the empire  
at its peak***

LIGHT

ALSO CALLED THE  
GREAT, HE RULED THE  
EMPIRE AT ITS PEAK

REGULAR

ALSO CALLED THE  
GREAT, HE RULED THE  
EMPIRE AT ITS PEAK

**BOLD**

**ALSO CALLED THE  
GREAT, HE RULED THE  
EMPIRE AT ITS PEAK**

**BLACK**

**ALSO CALLED THE  
GREAT, HE RULED THE  
EMPIRE AT ITS PEAK**

**Stencil sample sentence 30/30pt**

---

Light

Also called the Great,  
he ruled the empire  
at its peak

Regular

Also called the Great,  
he ruled the empire  
at its peak

Bold

Also called the Great,  
he ruled the empire  
at its peak

Black

Also called the Great,  
he ruled the empire  
at its peak

LIGHT

ALSO CALLED THE  
GREAT, HE RULED THE  
EMPIRE AT ITS PEAK

REGULAR

ALSO CALLED THE  
GREAT, HE RULED THE  
EMPIRE AT ITS PEAK

BOLD

ALSO CALLED THE  
GREAT, HE RULED THE  
EMPIRE AT ITS PEAK

BLACK

ALSO CALLED THE  
GREAT, HE RULED THE  
EMPIRE AT ITS PEAK

## Uprights sample paragraph 8/12pt

---

### Light

Bw Darius is an elegant wedge serif typeface, halfway between the transitional and didone genres, with a sharper approach to terminals without falling on the stiffness of the didones. The wide skeleton, modern proportions and high contrast, all contribute to the opulent personality of this font.

Bw Darius comes in 4 weights (from a delicate Light to a robust and sturdy Black) with matching true italics and a stencil version, allowing brands to use the different voice tonalities within the same style. Its tall x-height and open apertures makes it fit for display but also body text purposes, performing well both on screen and printed.

It supports all European Latin languages and it includes OpenType features like Old-Style figures, fractions, case sensitive forms, standard ligatures and unusual discretionary ligatures.

### Bold

**Bw Darius is an elegant wedge serif typeface, halfway between the transitional and didone genres, with a sharper approach to terminals without falling on the stiffness of the didones. The wide skeleton, modern proportions and high contrast, all contribute to the opulent personality of this font.**

**Bw Darius comes in 4 weights (from a delicate Light to a robust and sturdy Black) with matching true italics and a stencil version, allowing brands to use the different voice tonalities within the same style. Its tall x-height and open apertures makes it fit for display but also body text purposes, performing well both on screen and printed.**

**It supports all European Latin languages and it includes OpenType features like Old-Style figures, fractions, case sensitive forms, standard ligatures and unusual discretionary ligatures.**

### Regular

Bw Darius is an elegant wedge serif typeface, halfway between the transitional and didone genres, with a sharper approach to terminals without falling on the stiffness of the didones. The wide skeleton, modern proportions and high contrast, all contribute to the opulent personality of this font.

Bw Darius comes in 4 weights (from a delicate Light to a robust and sturdy Black) with matching true italics and a stencil version, allowing brands to use the different voice tonalities within the same style. Its tall x-height and open apertures makes it fit for display but also body text purposes, performing well both on screen and printed.

It supports all European Latin languages and it includes OpenType features like Old-Style figures, fractions, case sensitive forms, standard ligatures and unusual discretionary ligatures.

### Black

**Bw Darius is an elegant wedge serif typeface, halfway between the transitional and didone genres, with a sharper approach to terminals without falling on the stiffness of the didones. The wide skeleton, modern proportions and high contrast, all contribute to the opulent personality of this font.**

**Bw Darius comes in 4 weights (from a delicate Light to a robust and sturdy Black) with matching true italics and a stencil version, allowing brands to use the different voice tonalities within the same style. Its tall x-height and open apertures makes it fit for display but also body text purposes, performing well both on screen and printed.**

**It supports all European Latin languages and it includes OpenType features like Old-Style figures, fractions, case sensitive forms, standard ligatures and unusual discretionary ligatures.**

## Italics sample paragraph 8/12pt

---

### Light

*Bw Darius is an elegant wedge serif typeface, halfway between the transitional and didone genres, with a sharper approach to terminals without falling on the stiffness of the didones. The wide skeleton, modern proportions and high contrast, all contribute to the opulent personality of this font.*

*Bw Darius comes in 4 weights (from a delicate Light to a robust and sturdy Black) with matching true italics and a stencil version, allowing brands to use the different voice tonalities within the same style. Its tall x-height and open apertures makes it fit for display but also body text purposes, performing well both on screen and printed.*

*It supports all European Latin languages and it includes OpenType features like Old-Style figures, fractions, case sensitive forms, standard ligatures and unusual discretionary ligatures.*

### Bold

***Bw Darius is an elegant wedge serif typeface, halfway between the transitional and didone genres, with a sharper approach to terminals without falling on the stiffness of the didones. The wide skeleton, modern proportions and high contrast, all contribute to the opulent personality of this font.***

***Bw Darius comes in 4 weights (from a delicate Light to a robust and sturdy Black) with matching true italics and a stencil version, allowing brands to use the different voice tonalities within the same style. Its tall x-height and open apertures makes it fit for display but also body text purposes, performing well both on screen and printed.***

***It supports all European Latin languages and it includes OpenType features like Old-Style figures, fractions, case sensitive forms, standard ligatures and unusual discretionary ligatures.***

### Regular

*Bw Darius is an elegant wedge serif typeface, halfway between the transitional and didone genres, with a sharper approach to terminals without falling on the stiffness of the didones. The wide skeleton, modern proportions and high contrast, all contribute to the opulent personality of this font.*

*Bw Darius comes in 4 weights (from a delicate Light to a robust and sturdy Black) with matching true italics and a stencil version, allowing brands to use the different voice tonalities within the same style. Its tall x-height and open apertures makes it fit for display but also body text purposes, performing well both on screen and printed.*

*It supports all European Latin languages and it includes OpenType features like Old-Style figures, fractions, case sensitive forms, standard ligatures and unusual discretionary ligatures.*

### Black

***Bw Darius is an elegant wedge serif typeface, halfway between the transitional and didone genres, with a sharper approach to terminals without falling on the stiffness of the didones. The wide skeleton, modern proportions and high contrast, all contribute to the opulent personality of this font.***

***Bw Darius comes in 4 weights (from a delicate Light to a robust and sturdy Black) with matching true italics and a stencil version, allowing brands to use the different voice tonalities within the same style. Its tall x-height and open apertures makes it fit for display but also body text purposes, performing well both on screen and printed.***

***It supports all European Latin languages and it includes OpenType features like Old-Style figures, fractions, case sensitive forms, standard ligatures and unusual discretionary ligatures.***

## Character set. Uprights

**Extended Latin uppercase** A Á Ā Ă Â Ä À Ā Ą Ą Ą Ą Æ B C Ć Ć  
 Ç Ć D Đ Ď Đ E É Ě Ê Ě È Ě Ě F  
 G Ğ Ğ Ğ Ğ H Ĥ I Í Î Ï Ï Ï Ĳ J J K  
 Ķ L Ł Ł Ł Ł M N Ń Ń Ń Ń Ń O Ó  
 Ô Ö Ò Ő Ő Ø Æ P Þ Q R R Ę  
 Ŕ S Ś Ś Ś Ś Ŧ T F Ŧ Ŧ Ŧ U Ú Ũ Ü  
 Û Ů Ů Ů Ů V W W W W W X Y Ý  
 Ŷ ŷ Ÿ Z Ż Ź Ż

**Extended Latin lowercase** a á ă â ä à ā ą ą ą ą æ b c ć ć ć  
 ç Ć d đ đ e é ě ê ě è ě ę f g ğ ğ  
 ğ h ĥ i i í î ï ï ï Ĳ j j k ķ l ł ł ł  
 m n ń ń ń ń ŋ ŋ ñ o ó ô ö ò ő ō ø  
 õ œ p þ q r r r ŕ s ś ś ś ś Ŧ t t  
 Ŧ Ŧ Ŧ u ú ũ ü ù ů ů ů v w w w  
 w w x y ý ŷ ŷ ŷ z ż ź ź

**Standard ligatures (default)** fä fb fë ff ffb ffh ffi ffj ffk ffl fft fh  
 fh fí fî fj fk fl fö ft fü fy fy fi fl tt tv  
 ty tý

**Discretionary ligatures** AA @ @ HD HK HP HR Ia Ie Io MD MH  
 MK MP MR OC OO UK UR oo

**Symbols and punctuation** ª º \* \ . . : , ... ! j # . ? ¿ ° ' " ; /  
 \_ { } [ ] ( ) — — — « » ‹ › „ “ ” ‘ ’ ,  
 € ¢ ¢ \$ f £ ¥ ≈ ~ ÷ ø = > ≥ ∞  
 ∫ < ≤ − − × ≠ ∂ % ‰ ‰ + ± ∏ √  
 ∑ ∠ ∥ ∥ @ & ¶ © ® § ™ ^ † ‡ ´ ˘  
 ˇ ˆ ˜ ˚ ˛ ˜ ˚ ˛ ˜ ˚ ˛

**Lining figures (default)** 1234567890%€£\$¥

**Old style figures** 1234567890%€£\$¥

**Fractions** 1/2 1/3 2/3 3/4 1/5 2/5 1/6 1/7 3/8 1/10 12345/67890

**Case sensitive** ži{[(Ca-se)]} ži{[(CA-SE)]}

**Superior and inferior figures** Su1234 In5678 Su<sup>12345</sup> In<sub>67890</sub>

**Arrows** ← ↑ → ↓ ↖ ↗ ↘ ↙ ← ↑ → ↓ ↖ ↗ ↘ ↙



## Character set. Stencil

**Extended Latin uppercase** A Á Ă Â Ã Ä Å Ā Ȧ Ą ã Æ B C Ć Ć  
 Ç Ć D Đ Ď Ď E É Ě Ê Ë È Ē Ę F  
 G Ğ Ğ Ġ H Ĩ I Í Î Ï Ī Ĵ J K  
 Ķ L Ł Ľ Ļ ļ M N Ń Ņ ņ N Ñ Ñ O Ó  
 Ô Ö Ò Ő Ō Ø Õ Œ P Þ Q R R Ę  
 Ŕ S Ś Š Ŝ ŝ B T Ƨ Ƨ Ƨ U Ú Ů Ü  
 Û Ũ Ū Ŭ Ů V W W Ŵ ŵ W X Y Ý  
 Ŷ ŷ Ÿ Z Ż ź Ż

**Extended Latin lowercase** a á ă â ä à ā ą ą ã æ b c ć Ć Ć  
 ç Ć d đ đ e é ě ê ë è ē ę f g ğ ğ  
 ġ h ħ i í î ï ï ĩ ĵ j k ķ l ł ĺ ĺ  
 m n ń ņ ŋ ŋ ñ o ó ô ö ò ő ō ø  
 õ œ p þ q r r Ƨ s ś š ŝ ŝ B t t  
 Ƨ Ƨ u ú û ü ù ú ū ŭ Ů v w w ŵ  
 w w x y ý ŷ ŷ ŷ z ź ź Ż

**Standard ligatures (default)** fä fb fë ff ffb ffh ffi ffj ffk ffl fft fh  
 fh fi fi fj fk fl fö ft fü fy fy fi fl tt tv  
 ty ty

**Discretionary ligatures** AA @ @ © HD HK HP HR Ia Ie Io MD MH  
 MK MP MR O O UK UR oo

**Symbols and punctuation** ª º \* \ . . : , ... ! j # . ? ¿ ° ' " ; /  
 \_ { } [ ] ( ) — — — « » ‹ › „ “ ” ‘ ’ ,  
 € ¢ ¤ \$ f £ ¥ ≈ ~ ÷ ø = > ≥ ∞  
 ∫ < ≤ − − × ≠ ∂ % ‰ ‰ + ± ∏ √  
 ∑ ∠ † ‡ @ & ¶ © ® § ™ ^ † ‡ ´ ˘  
 ˇ ˆ ˜ ˚ ˛ ˜ ˚ ˛ ˜ ˚ ˛

**Lining figures (default)** 1234567890%€£\$¥

**Old style figures** 1234567890%€£\$¥

**Fractions** 1/2 1/3 2/3 3/4 1/5 2/5 1/6 1/7 3/8 1/10 12345/67890

**Case sensitive** ži{[(Ca-se)]} ži{[(CA-SE)]}

**Superior and inferior figures** Su1234 In5678 Su<sup>12345</sup> In<sub>67890</sub>

**Arrows** ← ↑ → ↓ ↖ ↗ ↘ ↙ ← ↑ → ↓ ↖ ↗ ↘ ↙



**Branding with Type**

Maria Montessori 8  
Zaragoza, Spain

+34 635 54 04 54  
(10h to 18h CET)

[info@brandingwithtype.com](mailto:info@brandingwithtype.com)

**Browse our full catalog  
at [brandingwithtype.com](http://brandingwithtype.com)**

*Thanks!*