

Bw Aleta N° 10

Bw Aleta N° 20

— type
specimen

Description

Designed by Alberto Romanos, Bw Aleta is a multi-purpose geometric sans with humanist traits. Its wide proportions, straight-forward drawing and obvious modulation on selected areas, all build towards a contemporary & sharp personality. Bw Aleta is deployed as two distinct subfamilies: No. 10 is the quirkiest sibling celebrating all its angles, while No. 20 presents a slightly quieter feel.

Bw Aleta N° 10

Hairline *Italic*

Thin *Italic*

ExtraLight *Italic*

Light *Italic*

Regular *Italic*

Medium *Italic*

Bold *Italic*

ExtraBold *Italic*

Black *Italic*

Bw Aleta N° 20

Hairline *Italic*

Thin *Italic*

ExtraLight *Italic*

Light *Italic*

Regular *Italic*

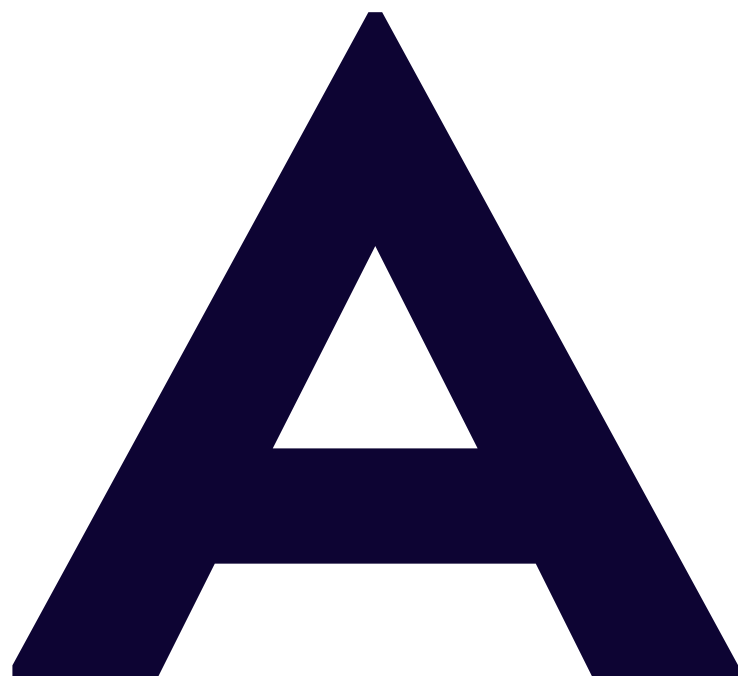
Medium *Italic*

Bold *Italic*

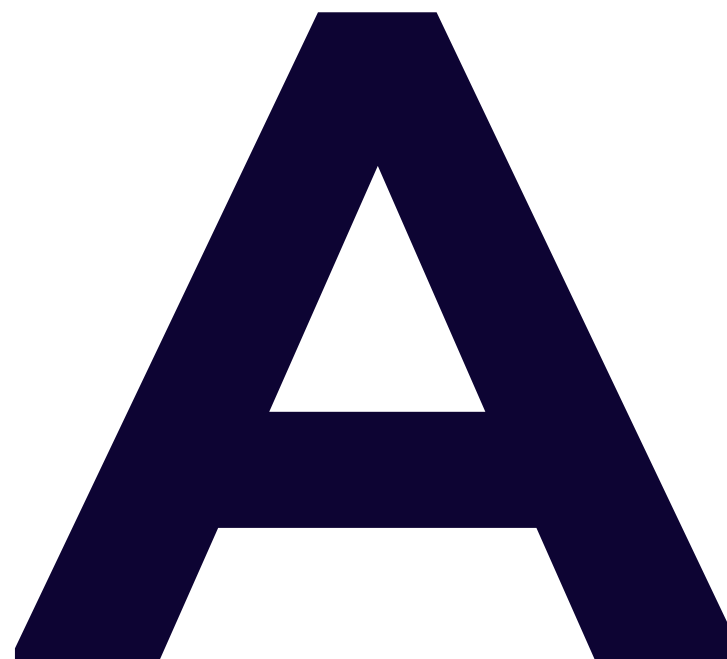
ExtraBold *Italic*

Black *Italic*

Bw Aleta N° 10



Bw Aleta N° 20



Subfamilies

N° 10

A K M N V W 1 4

& a k l v w 1 4

N° 20

A K M N V W 1 4

& a k l v w 1 4

Common anatomy

ascender height = cap height

G

generous
crossbars

h

increased
contrast
at joins

t

shaved external
acute angles

vertical
terminals

)

lighter
punctuation
& diacritics

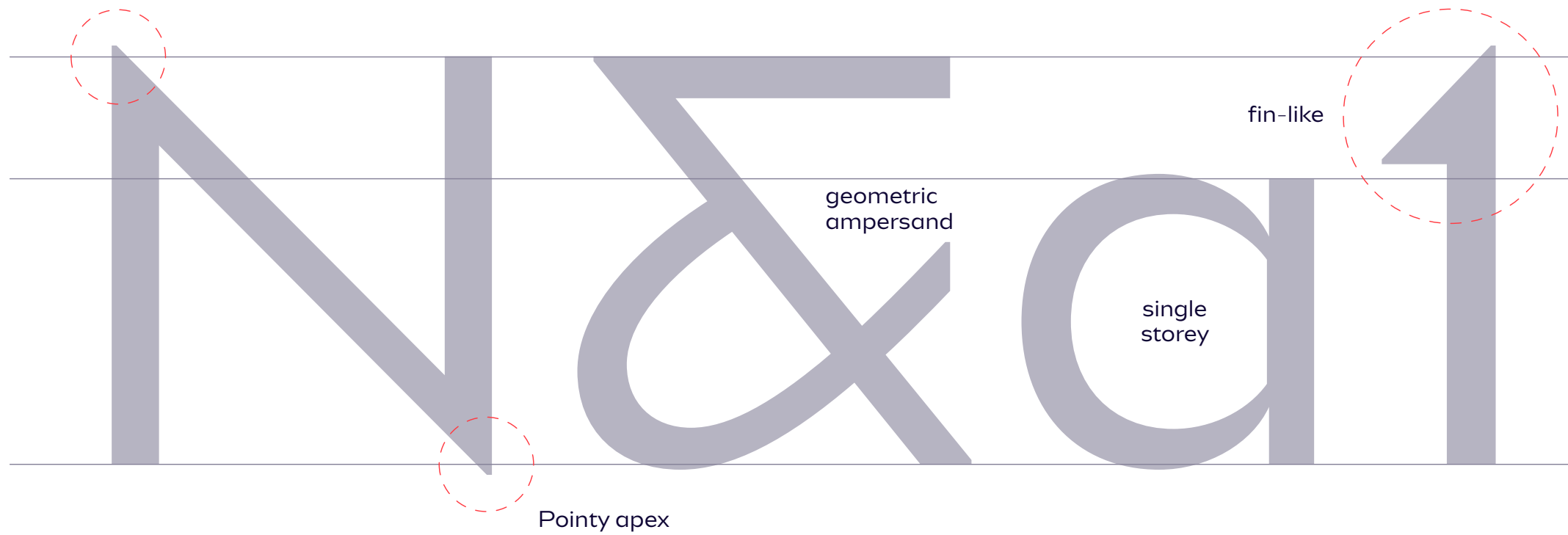
e

enclosed
counters

N° 10

— Minimal, Humanist,
Geometric, Unapologetic,
**Workhorse, Confident,
Display & Sharp.**

N° 10 anatomy



Jetzt im KINO


hammerhead

SharkAttack

It inhabits the continental shelf, from sandy shorelines (hence the name sand tiger shark) and submerged reefs to a depth of around 191 m (627 ft). They dwell in the waters of Japan, Australia, South Africa, the Mediterranean and the east coasts of North and South America.



3.2m
max lenght



159kg
max weight

S a n d t i g

Ě Ů Ŕ Ø Đ ï Å
© § ¶ # @ %

N° 10 uprights sample paragraph 8/12pt

100 — Hairline

Designed by Alberto Romanos, Bw Aleta is a multi-purpose geometric sans with humanist traits. Its wide proportions, straight-forward drawing and obvious modulation on selected areas, all build towards a contemporary & sharp personality. Bw Aleta is deployed as two distinct subfamilies: No. 10 is the quirkiest sibling celebrating all its angles, while No. 20 presents a slightly quieter feel.

200 — Thin

Designed by Alberto Romanos, Bw Aleta is a multi-purpose geometric sans with humanist traits. Its wide proportions, straight-forward drawing and obvious modulation on selected areas, all build towards a contemporary & sharp personality. Bw Aleta is deployed as two distinct subfamilies: No. 10 is the quirkiest sibling celebrating all its angles, while No. 20 presents a slightly quieter feel.

300 — ExtraLight

Designed by Alberto Romanos, Bw Aleta is a multi-purpose geometric sans with humanist traits. Its wide proportions, straight-forward drawing and obvious modulation on selected areas, all build towards a contemporary & sharp personality. Bw Aleta is deployed as two distinct subfamilies: No. 10 is the quirkiest sibling celebrating all its angles, while No. 20 presents a slightly quieter feel.

400 — Light

Designed by Alberto Romanos, Bw Aleta is a multi-purpose geometric sans with humanist traits. Its wide proportions, straight-forward drawing and obvious modulation on selected areas, all build towards a contemporary & sharp personality. Bw Aleta is deployed as two distinct subfamilies: No. 10 is the quirkiest sibling celebrating all its angles, while No. 20 presents a slightly quieter feel.

500 — Regular

Designed by Alberto Romanos, Bw Aleta is a multi-purpose geometric sans with humanist traits. Its wide proportions, straight-forward drawing and obvious modulation on selected areas, all build towards a contemporary & sharp personality. Bw Aleta is deployed as two distinct subfamilies: No. 10 is the quirkiest sibling celebrating all its angles, while No. 20 presents a slightly quieter feel.

600 — Medium

Designed by Alberto Romanos, Bw Aleta is a multi-purpose geometric sans with humanist traits. Its wide proportions, straight-forward drawing and obvious modulation on selected areas, all build towards a contemporary & sharp personality. Bw Aleta is deployed as two distinct subfamilies: No. 10 is the quirkiest sibling celebrating all its angles, while No. 20 presents a slightly quieter feel.

700 — Bold

Designed by Alberto Romanos, Bw Aleta is a multi-purpose geometric sans with humanist traits. Its wide proportions, straight-forward drawing and obvious modulation on selected areas, all build towards a contemporary & sharp personality. Bw Aleta is deployed as two distinct subfamilies: No. 10 is the quirkiest sibling celebrating all its angles, while No. 20 presents a slightly quieter feel.

800 — ExtraBold

Designed by Alberto Romanos, Bw Aleta is a multi-purpose geometric sans with humanist traits. Its wide proportions, straight-forward drawing and obvious modulation on selected areas, all build towards a contemporary & sharp personality. Bw Aleta is deployed as two distinct subfamilies: No. 10 is the quirkiest sibling celebrating all its angles, while No. 20 presents a slightly quieter feel.

900 — Black

Designed by Alberto Romanos, Bw Aleta is a multi-purpose geometric sans with humanist traits. Its wide proportions, straight-forward drawing and obvious modulation on selected areas, all build towards a contemporary & sharp personality. Bw Aleta is deployed as two distinct subfamilies: No. 10 is the quirkiest sibling celebrating all its angles, while No. 20 presents a slightly quieter feel.

N° 10 oblique italics sample paragraph 8/12pt

100 — Hairline

Designed by Alberto Romanos, Bw Aleta is a multi-purpose geometric sans with humanist traits. Its wide proportions, straight-forward drawing and obvious modulation on selected areas, all build towards a contemporary & sharp personality. Bw Aleta is deployed as two distinct subfamilies: No. 10 is the quirkiest sibling celebrating all its angles, while No. 20 presents a slightly quieter feel.

200 — Thin

Designed by Alberto Romanos, Bw Aleta is a multi-purpose geometric sans with humanist traits. Its wide proportions, straight-forward drawing and obvious modulation on selected areas, all build towards a contemporary & sharp personality. Bw Aleta is deployed as two distinct subfamilies: No. 10 is the quirkiest sibling celebrating all its angles, while No. 20 presents a slightly quieter feel.

300 — ExtraLight

Designed by Alberto Romanos, Bw Aleta is a multi-purpose geometric sans with humanist traits. Its wide proportions, straight-forward drawing and obvious modulation on selected areas, all build towards a contemporary & sharp personality. Bw Aleta is deployed as two distinct subfamilies: No. 10 is the quirkiest sibling celebrating all its angles, while No. 20 presents a slightly quieter feel.

400 — Light

Designed by Alberto Romanos, Bw Aleta is a multi-purpose geometric sans with humanist traits. Its wide proportions, straight-forward drawing and obvious modulation on selected areas, all build towards a contemporary & sharp personality. Bw Aleta is deployed as two distinct subfamilies: No. 10 is the quirkiest sibling celebrating all its angles, while No. 20 presents a slightly quieter feel.

500 — Regular

Designed by Alberto Romanos, Bw Aleta is a multi-purpose geometric sans with humanist traits. Its wide proportions, straight-forward drawing and obvious modulation on selected areas, all build towards a contemporary & sharp personality. Bw Aleta is deployed as two distinct subfamilies: No. 10 is the quirkiest sibling celebrating all its angles, while No. 20 presents a slightly quieter feel.

600 — Medium

Designed by Alberto Romanos, Bw Aleta is a multi-purpose geometric sans with humanist traits. Its wide proportions, straight-forward drawing and obvious modulation on selected areas, all build towards a contemporary & sharp personality. Bw Aleta is deployed as two distinct subfamilies: No. 10 is the quirkiest sibling celebrating all its angles, while No. 20 presents a slightly quieter feel.

700 — Bold

Designed by Alberto Romanos, Bw Aleta is a multi-purpose geometric sans with humanist traits. Its wide proportions, straight-forward drawing and obvious modulation on selected areas, all build towards a contemporary & sharp personality. Bw Aleta is deployed as two distinct subfamilies: No. 10 is the quirkiest sibling celebrating all its angles, while No. 20 presents a slightly quieter feel.

800 — ExtraBold

Designed by Alberto Romanos, Bw Aleta is a multi-purpose geometric sans with humanist traits. Its wide proportions, straight-forward drawing and obvious modulation on selected areas, all build towards a contemporary & sharp personality. Bw Aleta is deployed as two distinct subfamilies: No. 10 is the quirkiest sibling celebrating all its angles, while No. 20 presents a slightly quieter feel.

900 — Black

Designed by Alberto Romanos, Bw Aleta is a multi-purpose geometric sans with humanist traits. Its wide proportions, straight-forward drawing and obvious modulation on selected areas, all build towards a contemporary & sharp personality. Bw Aleta is deployed as two distinct subfamilies: No. 10 is the quirkiest sibling celebrating all its angles, while No. 20 presents a slightly quieter feel.

N° 10 uprights sample headline 24/28pt

100 — Hairline

Glāžšķūṅa rūķīši dzērumā čiepj
Baha koncertflīgeļu vākus

200 — Thin

Hyvän lorun sangen pieneksi
hyödyksi jäi suomen kirjaimet

300 — ExtraLight

Hayvancağız tüfekçide bagaj
törpüsü olmuş

400 — Light

Few black taxis drive up major
roads on quiet hazy nights

500 — Regular

Queda gazpacho, fibra, látex,
jamón, kiwi y viñas

600 — Medium

**Koń i żółw grali w kości
z piękną ćmą u źródła.**

700 — Bold

**Voyez le brick géant que
j'examine près du wharf**

800 — ExtraBold

**Hled', toť přízračný kůň v
mátožné póze šíleně úpí**

900 — Black

**Jubedalt möirgav löukoer
hüppas tänaval**

N° 10 oblique italics sample headline 24/28pt

100 — Hairline

*Glāžšķūņa rūķīši dzērumā čiepj
Baha koncertflīģeļu vākus*

200 — Thin

*Hyvän lorun sangen pieneksi
hyödyksi jäi suomen kirjaimet*

300 — ExtraLight

*Hayvancağız tüfekçide bagaj
törpüsü olmuş*

400 — Light

*Few black taxis drive up major
roads on quiet hazy nights*

500 — Regular

*Queda gazpacho, fibra, látex,
jamón, kiwi y viñas*

600 — Medium

**Koń i żółw grali w kości
z piękną ćmą u źródła.**

700 — Bold

**Voyez le brick géant que
j'examine près du wharf**

800 — ExtraBold

**Hled', toť přízračný kůň v
mátožné póze šíleně úpí**

900 — Black

**Jubedalt möirgav lõukoer
hüppas tänaval**

N° 10 uprights CAPS sample headline 24/28pt

100 — HAIRLINE

A WIZARD'S JOB IS TO VEX
CHUMPS QUICKLY IN FOG

200 — THIN

GUD HJÄLPE ZORNS MÖ
QVICKT FÅ BYXA

300 — EXTRALIGHT

HIŠNIČIN BRATEC VZGAJA
POLŽE POD FIKUSOM

400 — LIGHT

“FIX, SCHWYZI!” QUÄKT
JÜRGEN BLÖD VOM PAß

500 — REGULAR

JOSÉ COMPRÓ UNA VIEJA
ZAMPOÑA EN PERÚ

600 — MEDIUM

PÓJDŹ W LOCH ZBIĆ
MAŁŻEŃSKĄ GĘŚ FUTRYN!

700 — BOLD

HØJ BLY GOM VANDT
FRÆK SEXQUIZ PÅ WC

800 — EXTRABOLD

KŘDEL' ĎAT'LOV UČÍ KOŇA
ŽRAŤ KÔRU

900 — BLACK

SEE VÄIKE MÖLDER
JÕUAB RONGILE HÜPATA

N° 10 oblique italics CAPS sample headline 24/28pt

100 — HAIRLINE

A WIZARD'S JOB IS TO VEX
CHUMPS QUICKLY IN FOG

200 — THIN

GUD HJÄLPE ZORNS MÖ
QVICKT FÅ BYXA

300 — EXTRALIGHT

HIŠNIČIN BRATEC VZGAJA
POLŽE POD FIKUSOM

400 — LIGHT

“FIX, SCHWYZ!” QUÄKT
JÜRGEN BLÖD VOM PAß

500 — REGULAR

JOSÉ COMPRÓ UNA VIEJA
ZAMPOÑA EN PERÚ

600 — MEDIUM

PÓJDŹ W LOCH ZBIĆ
MAŁŻEŃSKĄ GĘŚ FUTRYN!

700 — BOLD

HØJ BLY GOM VANDT
FRÆK SEXQUIZ PÅ WC

800 — EXTRABOLD

KŔDEL' ĎAT'OV UČÍ KOŇA
ŽRAŤ KÔRU

900 — BLACK

SEE VÄIKE MÖLDER
JÕUAB RONGILE HÛPATA



Nº 10 character set

Extended Latin uppercase

A Á Ă Â Ä À Ā Ą Ą Ą Æ Æ B C Ć
Č Ć Ć Ć Đ Ď Ď Ď E É Ě Ê Ě Ě È Ě
Ę F G Ğ Ğ Ğ H H I U Ú Í Î Ï Ī Ĵ
J J K Ł L Ľ Ľ Ľ M N Ń Ń Ń N Ń
Ñ O Ó Ô Ö Ò Ő Ő Ø Œ P P
Q R Ř Ŕ Ŕ S Ś Ś Ś Ś Œ T Ŧ Ŧ Ŧ
Ŧ U Ú Ū Ū Ū Ū Ū V W W W
W W X Y Ý Ŷ Ŷ Ŷ Ŷ Z Ź Ź Ź

Extended Latin lowercase

a á ă â ä à ā ą ą ą Æ æ b c ć
č ĉ ĉ ĉ ĉ đ ě e é ě ê ě ě è ē ę f g
ğ ğ ğ h ħ i i í î ï ï ĵ ĵ ĵ j j k ł l
ł ł ł m n ń ŋ ŋ ŋ ñ o ó ô ö ò ő ő
ø õ œ p þ q r ř ŕ ŕ s ś ś ś ś Œ t t
t t t u ú ū ū ū ū ū v w w w
w x y ý ŷ ŷ ŷ ŷ z ź ź ź

Ligatures

ff ffi ffl fi fl

Proportional lining figures

1234567890%%œ ß € ₹ £ ¥

Proportional old style figures

1234567890%%œ ß € ₹ £ ¥

Fractions

1/2 1/4 3/4 1/8 3/8 5/8 7/8 12345/67890

Symbols and punctuation

ª ° * \ . , · • : ; ... ! ¡ ? ¿ ° ' " / { } []
() — — — _ « » < > „ “ ” ‘ ’ , # † € ¢
\$ f £ ¥ % ‰ ≈ ~ ÷ ø = > ≥ ∞ <
≤ ¬ − × ≠ + ± ^ ∫ Δ Ω μ π ∂ ∏ √
Σ ∠ ∥ @ & § ¶ © ® ™ ^ + ≠ N° ´ ~
˘ ˙ ˚ ˛ ˜ ˝ ˆ ˇ

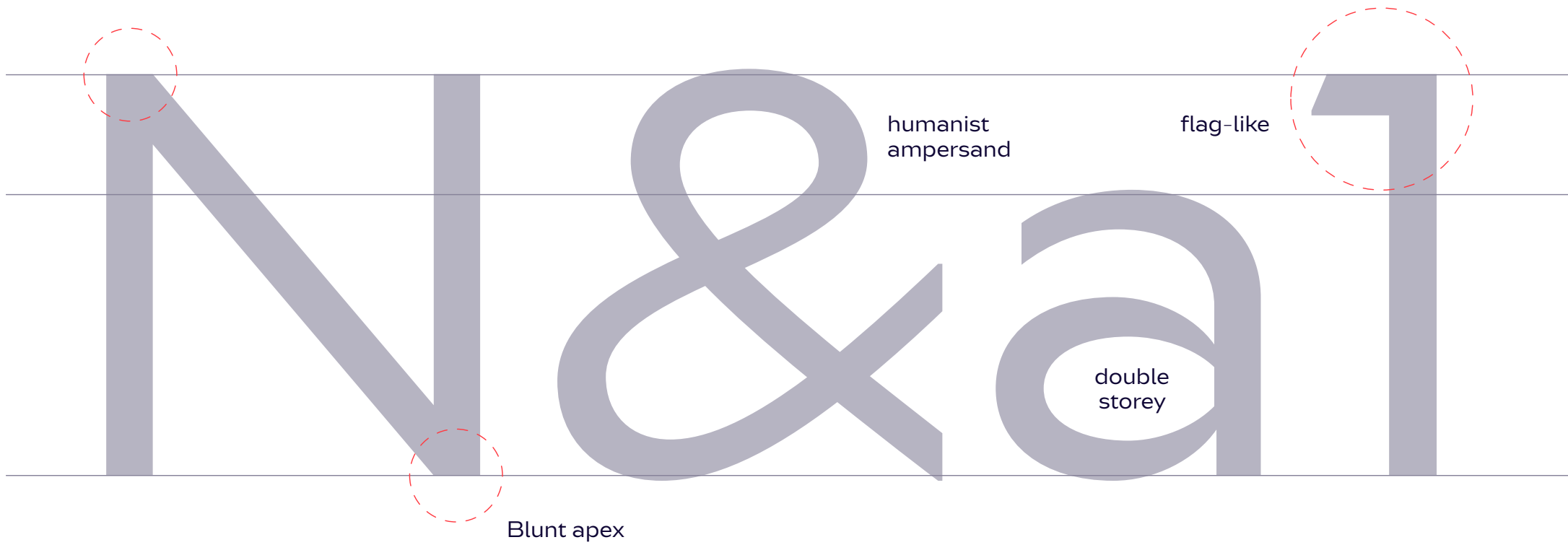
Case sensitive forms

\ i ¿ / { } [] () — — — « » < >

N° 20

— Legible, Character,
Meticulous, Performance,
Vivacious, Honesty,
Brutal & Text.

N° 20 anatomy



Bread & butter

Großartigsten

Estrafalarios

The blacktip shark was first described by the French zoologist **Achille Valenciennes** as *Carcharias* (*Prionodon*) *limbatus* in Johannes Müller and Henle's 1839 *Systematische Beschreibung der Plagiostomen*. The type specimens were two sharks caught off Martinique, both of which have since been lost. The specific epithet *limbatus* is Latin for “bordered”, referring to the black edges of this shark's dorsal fin.

2019 ANNUAL REPORT

We are the world's largest producer of canned laughter, both by volume and revenue, offering exhilarating solutions to more than 70 countries world-wide.

EBITDA	YTD*	ROI*	CTR*	LOL*
68M	19m	23%	0.1%	50%



N° 20 uprights sample paragraph 8/12pt

100 — Hairline

Designed by Alberto Romanos, Bw Aleta is a multi-purpose geometric sans with humanist traits. Its wide proportions, straight-forward drawing and obvious modulation on selected areas, all build towards a contemporary & sharp personality. Bw Aleta is deployed as two distinct subfamilies: No. 10 is the quirkiest sibling celebrating all its angles, while No. 20 presents a slightly quieter feel.

200 — Thin

Designed by Alberto Romanos, Bw Aleta is a multi-purpose geometric sans with humanist traits. Its wide proportions, straight-forward drawing and obvious modulation on selected areas, all build towards a contemporary & sharp personality. Bw Aleta is deployed as two distinct subfamilies: No. 10 is the quirkiest sibling celebrating all its angles, while No. 20 presents a slightly quieter feel.

300 — ExtraLight

Designed by Alberto Romanos, Bw Aleta is a multi-purpose geometric sans with humanist traits. Its wide proportions, straight-forward drawing and obvious modulation on selected areas, all build towards a contemporary & sharp personality. Bw Aleta is deployed as two distinct subfamilies: No. 10 is the quirkiest sibling celebrating all its angles, while No. 20 presents a slightly quieter feel.

400 — Light

Designed by Alberto Romanos, Bw Aleta is a multi-purpose geometric sans with humanist traits. Its wide proportions, straight-forward drawing and obvious modulation on selected areas, all build towards a contemporary & sharp personality. Bw Aleta is deployed as two distinct subfamilies: No. 10 is the quirkiest sibling celebrating all its angles, while No. 20 presents a slightly quieter feel.

500 — Regular

Designed by Alberto Romanos, Bw Aleta is a multi-purpose geometric sans with humanist traits. Its wide proportions, straight-forward drawing and obvious modulation on selected areas, all build towards a contemporary & sharp personality. Bw Aleta is deployed as two distinct subfamilies: No. 10 is the quirkiest sibling celebrating all its angles, while No. 20 presents a slightly quieter feel.

600 — Medium

Designed by Alberto Romanos, Bw Aleta is a multi-purpose geometric sans with humanist traits. Its wide proportions, straight-forward drawing and obvious modulation on selected areas, all build towards a contemporary & sharp personality. Bw Aleta is deployed as two distinct subfamilies: No. 10 is the quirkiest sibling celebrating all its angles, while No. 20 presents a slightly quieter feel.

700 — Bold

Designed by Alberto Romanos, Bw Aleta is a multi-purpose geometric sans with humanist traits. Its wide proportions, straight-forward drawing and obvious modulation on selected areas, all build towards a contemporary & sharp personality. Bw Aleta is deployed as two distinct subfamilies: No. 10 is the quirkiest sibling celebrating all its angles, while No. 20 presents a slightly quieter feel.

800 — ExtraBold

Designed by Alberto Romanos, Bw Aleta is a multi-purpose geometric sans with humanist traits. Its wide proportions, straight-forward drawing and obvious modulation on selected areas, all build towards a contemporary & sharp personality. Bw Aleta is deployed as two distinct subfamilies: No. 10 is the quirkiest sibling celebrating all its angles, while No. 20 presents a slightly quieter feel.

900 — Black

Designed by Alberto Romanos, Bw Aleta is a multi-purpose geometric sans with humanist traits. Its wide proportions, straight-forward drawing and obvious modulation on selected areas, all build towards a contemporary & sharp personality. Bw Aleta is deployed as two distinct subfamilies: No. 10 is the quirkiest sibling celebrating all its angles, while No. 20 presents a slightly quieter feel.

N° 20 oblique italics sample paragraph 8/12pt

100 — Hairline

Designed by Alberto Romanos, Bw Aleta is a multi-purpose geometric sans with humanist traits. Its wide proportions, straight-forward drawing and obvious modulation on selected areas, all build towards a contemporary & sharp personality. Bw Aleta is deployed as two distinct subfamilies: No. 10 is the quirkiest sibling celebrating all its angles, while No. 20 presents a slightly quieter feel.

200 — Thin

Designed by Alberto Romanos, Bw Aleta is a multi-purpose geometric sans with humanist traits. Its wide proportions, straight-forward drawing and obvious modulation on selected areas, all build towards a contemporary & sharp personality. Bw Aleta is deployed as two distinct subfamilies: No. 10 is the quirkiest sibling celebrating all its angles, while No. 20 presents a slightly quieter feel.

300 — ExtraLight

Designed by Alberto Romanos, Bw Aleta is a multi-purpose geometric sans with humanist traits. Its wide proportions, straight-forward drawing and obvious modulation on selected areas, all build towards a contemporary & sharp personality. Bw Aleta is deployed as two distinct subfamilies: No. 10 is the quirkiest sibling celebrating all its angles, while No. 20 presents a slightly quieter feel.

400 — Light

Designed by Alberto Romanos, Bw Aleta is a multi-purpose geometric sans with humanist traits. Its wide proportions, straight-forward drawing and obvious modulation on selected areas, all build towards a contemporary & sharp personality. Bw Aleta is deployed as two distinct subfamilies: No. 10 is the quirkiest sibling celebrating all its angles, while No. 20 presents a slightly quieter feel.

500 — Regular

Designed by Alberto Romanos, Bw Aleta is a multi-purpose geometric sans with humanist traits. Its wide proportions, straight-forward drawing and obvious modulation on selected areas, all build towards a contemporary & sharp personality. Bw Aleta is deployed as two distinct subfamilies: No. 10 is the quirkiest sibling celebrating all its angles, while No. 20 presents a slightly quieter feel.

600 — Medium

Designed by Alberto Romanos, Bw Aleta is a multi-purpose geometric sans with humanist traits. Its wide proportions, straight-forward drawing and obvious modulation on selected areas, all build towards a contemporary & sharp personality. Bw Aleta is deployed as two distinct subfamilies: No. 10 is the quirkiest sibling celebrating all its angles, while No. 20 presents a slightly quieter feel.

700 — Bold

Designed by Alberto Romanos, Bw Aleta is a multi-purpose geometric sans with humanist traits. Its wide proportions, straight-forward drawing and obvious modulation on selected areas, all build towards a contemporary & sharp personality. Bw Aleta is deployed as two distinct subfamilies: No. 10 is the quirkiest sibling celebrating all its angles, while No. 20 presents a slightly quieter feel.

800 — ExtraBold

Designed by Alberto Romanos, Bw Aleta is a multi-purpose geometric sans with humanist traits. Its wide proportions, straight-forward drawing and obvious modulation on selected areas, all build towards a contemporary & sharp personality. Bw Aleta is deployed as two distinct subfamilies: No. 10 is the quirkiest sibling celebrating all its angles, while No. 20 presents a slightly quieter feel.

900 — Black

Designed by Alberto Romanos, Bw Aleta is a multi-purpose geometric sans with humanist traits. Its wide proportions, straight-forward drawing and obvious modulation on selected areas, all build towards a contemporary & sharp personality. Bw Aleta is deployed as two distinct subfamilies: No. 10 is the quirkiest sibling celebrating all its angles, while No. 20 presents a slightly quieter feel.

N° 20 uprights sample headline 24/28pt

100 — Hairline

Glāžšķūṅa rūķiši dzērumā čiepj
Baha koncertflīģeļu vākus

200 — Thin

Hyvän lorun sangen pieneksi
hyödyksi jäi suomen kirjaimet

300 — ExtraLight

Hayvancağız tüfekçide bagaj
törpüsü olmuş

400 — Light

Few black taxis drive up major
roads on quiet hazy nights

500 — Regular

Queda gazpacho, fibra, látex,
jamón, kiwi y viñas

600 — Medium

**Koń i żółw grali w kości
z piękną ćmą u źródła.**

700 — Bold

**Voyez le brick géant que
j'examine près du wharf**

800 — ExtraBold

**Hled', toť přízračný kůň v
mátožné póze šíleně úpí**

900 — Black

**Jubedalt möirgav lõukoer
hüppas tänaval**

N° 20 oblique italics sample headline 24/28pt

100 — Hairline

Glāžšķūṅa rūķīši dzērumā čiepj
Baha koncertflīģeļu vākus

200 — Thin

Hyvän lorun sangen pieneksi
hyödyksi jäi suomen kirjaimet

300 — ExtraLight

Hayvancağız tüfekçide bagaj
törpüsü olmuş

400 — Light

Few black taxis drive up major
roads on quiet hazy nights

500 — Regular

Queda gazpacho, fibra, látex,
jamón, kiwi y viñas

600 — Medium

**Koń i żółw grali w kości
z piękną ćmą u źródła.**

700 — Bold

**Voyez le brick géant que
j'examine près du wharf**

800 — ExtraBold

**Hled', toť přízračný kůň v
mátožné póze šíleně úpí**

900 — Black

**Jubedalt möirgav lõukoer
hüppas tänaval**

N° 20 uprights CAPS sample headline 24/28pt

100 — HAIRLINE

A WIZARD'S JOB IS TO VEX
CHUMPS QUICKLY IN FOG

200 — THIN

GUD HJÄLPE ZORNS MÖ
QVICKT FÅ BYXA

300 — EXTRALIGHT

HIŠNIČIN BRATEC VZGAJA
POLŽE POD FIKUSOM

400 — LIGHT

“FIX, SCHWYZ!” QUÄKT
JÜRGEN BLÖD VOM PAß

500 — REGULAR

JOSÉ COMPRÓ UNA VIEJA
ZAMPOÑA EN PERÚ

600 — MEDIUM

PÓJDŹ W LOCH ZBIĆ
MAŁŻEŃSKĄ GĘŚ FUTRYN!

700 — BOLD

HØJ BLY GOM VANDT
FRÆK SEXQUIZ PÅ WC

800 — EXTRABOLD

KŔDEL' ĎAT'LOV UČÍ KOŇA
ŽRAŤ KÔRU

900 — BLACK

SEE VÄIKE MÖLDER
JÕUAB RONGILE HÜPATA

N° 20 oblique italics CAPS sample headline 24/28pt

100 — HAIRLINE

A WIZARD'S JOB IS TO VEX
CHUMPS QUICKLY IN FOG

200 — THIN

GUD HJÄLPE ZORNS MÖ
QVICKT FÅ BYXA

300 — EXTRALIGHT

HIŠNIČIN BRATEC VZGAJA
POLŽE POD FIKUSOM

400 — LIGHT

“FIX, SCHWYZ!” QUÄKT
JÜRGEN BLÖD VOM PAß

500 — REGULAR

JOSÉ COMPRÓ UNA VIEJA
ZAMPOÑA EN PERÚ

600 — MEDIUM

PÓJDŹ W LOCH ZBIĆ
MAŁŻEŃSKĄ GĘŚ FUTRYN!

700 — BOLD

HØJ BLY GOM VANDT
FRÆK SEXQUIZ PÅ WC

800 — EXTRABOLD

KŘDEL' ĎAT'LOV UČÍ KOŇA
ŽRAŤ KÔRU

900 — BLACK

SEE VÄIKE MÖLDER
JÕUAB RONGILE HÛPATA

Nº 20 character set

Extended Latin uppercase

A Á Ā Â Ã Ä Å Æ É B C Č
Ĉ Ċ Ď Đ Ē Ĕ Ė Ę Ě Ğ
Ę F Ģ Ģ Ģ Ģ Ģ Ĩ İ Í Î Ï Ĵ
J J K Ł L L L L M N Ń Ņ ņ Ŋ
Ñ O Ó Ô Õ Ò Ó Ō Ø Õ Œ P Þ
Q R Ŕ Ŗ Ŗ S Ś Š Ŝ ŝ ß T Ƨ Ƨ
Ƨ U Ú Û Ü Ù Ú Ū Ŭ Ů V W Ẁ Ẃ
Ẅ Ẅ X Y Ý Ŷ ŷ Ÿ Z Ẑ Ẓ Ẕ

Extended Latin lowercase

a á ă â ä à ā ạ ą ă ã æ æ b c ć ċ
č d đ d' đ e é ě ê ë è ē ę f g ğ
ğ ğ h ħ i i í î ï ï ĵ ĵ ĵ ĵ k ł l
l l l m n Ń Ņ ņ ŋ ñ o ó ô õ ò ó õ
ø õ œ p þ q r ŕ Ŗ Ŗ s ś š ŝ ŝ ß t t
t Ƨ Ƨ u ú û ü ù ú ū ŭ ů v w ẁ ẃ
ẅ ẅ x y ý ŷ ŷ ŷ z ẑ ẓ ẕ

Ligatures

ff ffi ffl fi fl

Proportional lining figures

1234567890%%œƒ\$€₹£¥

Proportional old style figures

1234567890%%œƒ\$€₹£¥

Fractions

½ ¼ ¾ ⅛ ⅜ ⅝ ⅞ 12345/67890

Symbols and punctuation

ª º * \ . , · · : ; … ! ¡ ? ¿ ° ' " / { } []
() — — — _ « » ‹ › „ “ ” ‘ ’ , # ¤ € ¢
\$ f £ ¥ % ‰ ≈ ~ ÷ ø = > ≥ ∞ <
≤ ¬ − × ≠ + ± ^ ∫ Δ Ω μ π ∂ ∏ √
Σ ∏ || @ & § ¶ © ® ™ ^ + # N° ´ ˘
˘ ˘ ˘ ˘ ˘ ˘ ˘ ˘ ˘ ˘

Case sensitive forms

\ i ¿ / { } [] () — — — « » ‹ ›

Branding with Type

Plaza Los Sitios 17
Principal Izquierda
50001 Zaragoza
Spain

+34 635 54 04 54
(10h to 18h CET)

info@brandingwithtype.com

**Browse our full catalogue
at brandingwithtype.com**

Thanks!